

APPENDIX



ลิขสิทธิ์มหาวิทยาลัยเชียงใหม่

Copyright© by Chiang Mai University

All rights reserved

Appendix 1

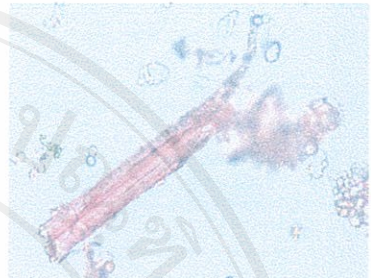
Identification of Duhuo Jisheng Wan



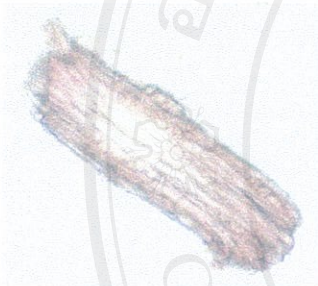
Crude drug



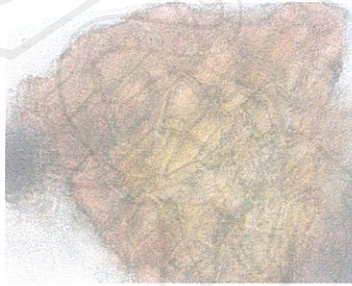
Calcium oxalate crystal



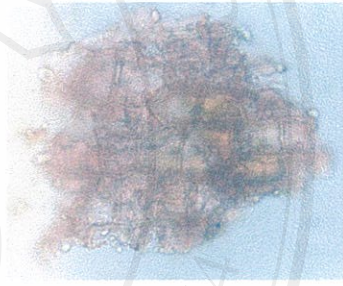
Fiber



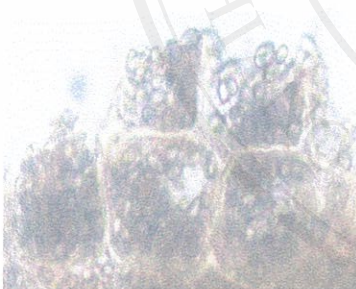
Fiber with crystals



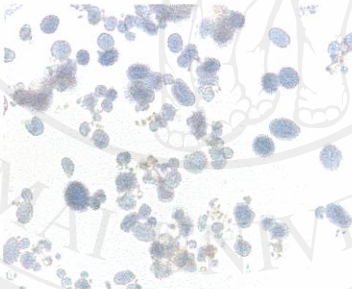
Epidermis



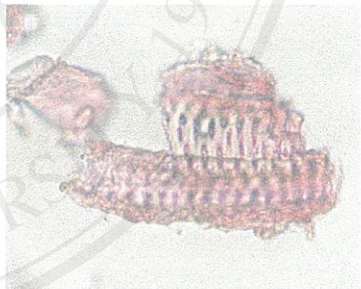
Epidermis and starch grain



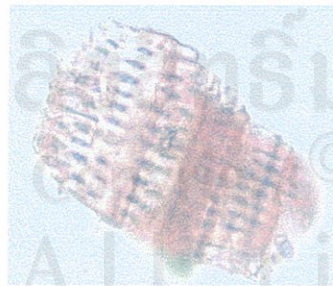
Parenchyma and starch grain



Starch grain (iodine stained)



Tracheid



Tracheid

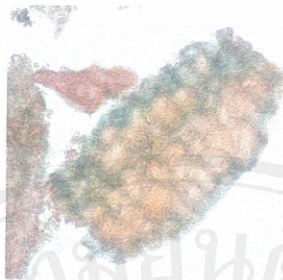


Vascular bundle

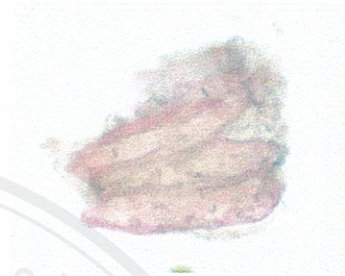
Appendix 2.1 Diagnostic structures of Radix Glycyrrhizae (Gancao).



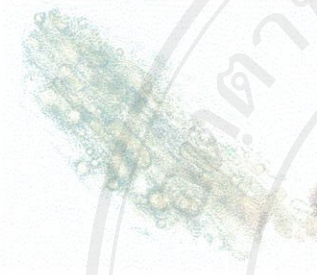
Crude drug



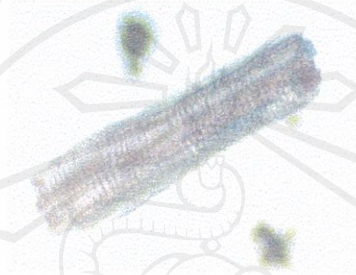
Cork 100x



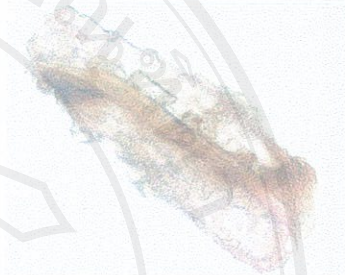
Fiber 200x



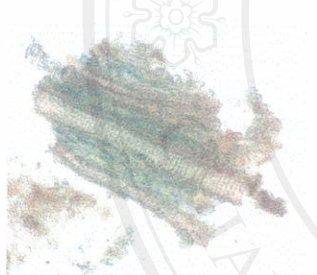
Parenchyma and oil 400x



Reticulate vessel 100x



Sclerenchyma 400x



Xylem 100x

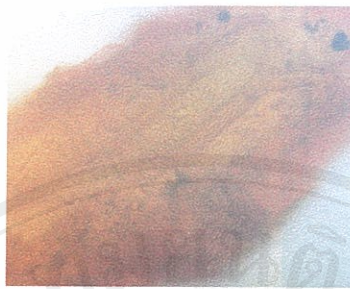


Xylem, parenchyma and epidermis 100 X

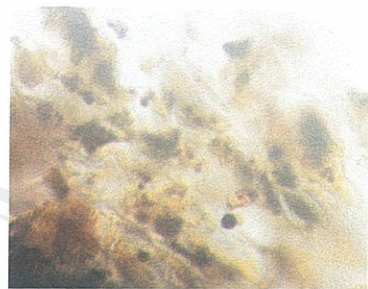
Appendix 2.2 Diagnostic structures of *Radix Gentianae Macrophyllae* (Qinjiao).



Crude drug



Epidermis



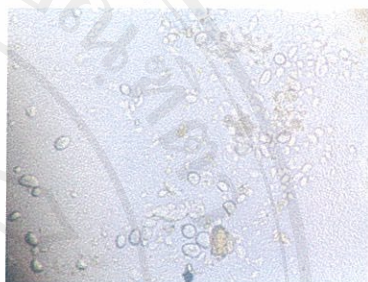
Parenchyma with starch



Reticulate vessel



Scalariform vessel



Starch grain

Appendix 2.3 Diagnostic structures of Rhizoma Chuanxiong (Chuanxiong).

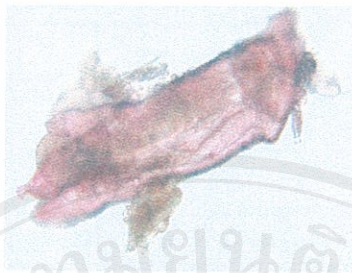
ลิขสิทธิ์มหาวิทยาลัยเชียงใหม่

Copyright© by Chiang Mai University

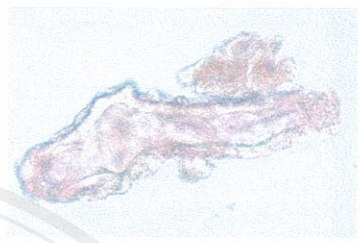
All rights reserved



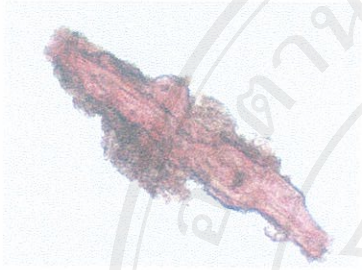
Crude drug



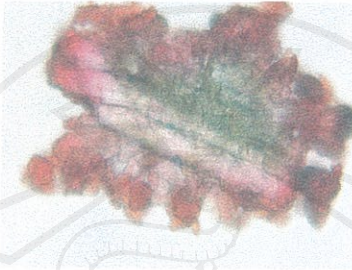
Fiber 200x



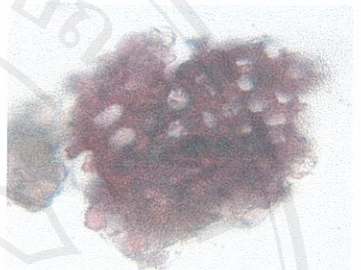
Fiber 400x



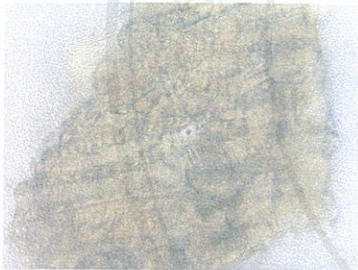
Fiber (safranin stained) 100x



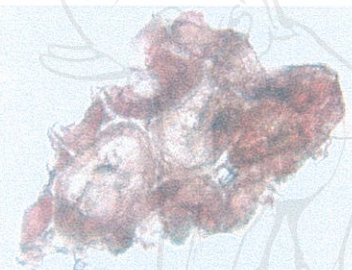
Fiber (safranin stained) 200x



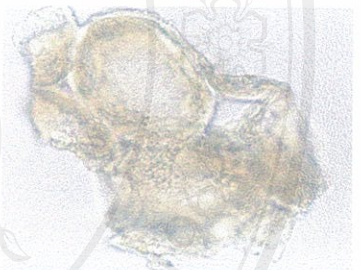
Collenchyma 200x



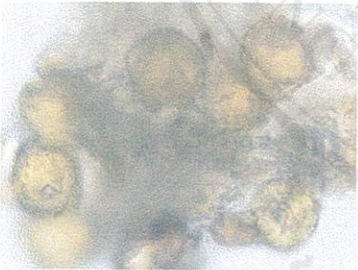
Fibrous layer of anther 400x



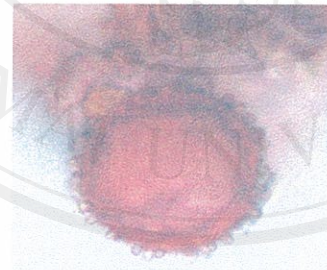
Parenchyma (crossed section) 200x



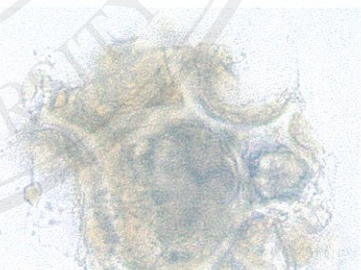
Parenchyma (crossed section) 400x



Pollen grains 400x



Pollen grain (safranin stained) 400x



Rosette crystal 400x



Rosette crystal 400x

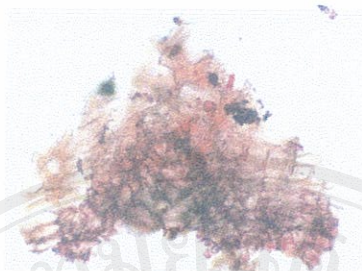


Sclereid (safranin stained) 400x

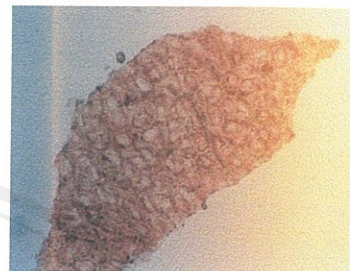
Appendix 2.4 Diagnostic structures of Herba Taxilli (Sangjisheng).



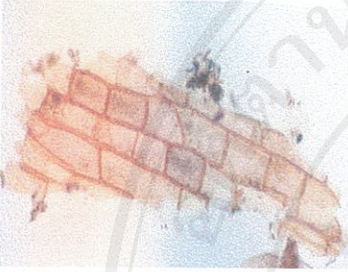
Crude drug



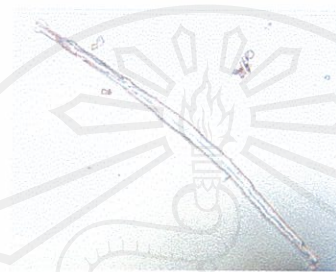
Cork and lenticel (crossed section) 100x



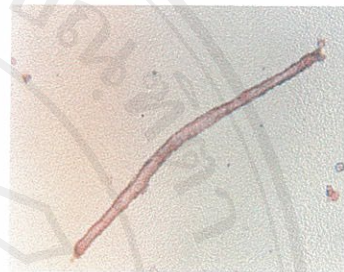
Cork (surface view) 200x



Epidermis 200x



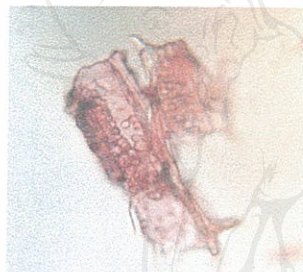
Fiber 100x



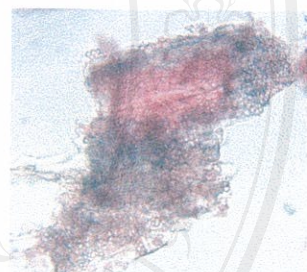
Fiber (saffranin stained) 100x



Trichomes 200x



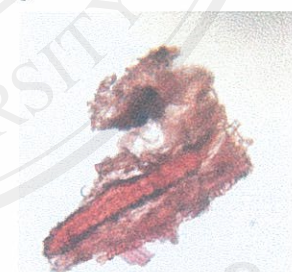
Parenchyma with starch grains 200x



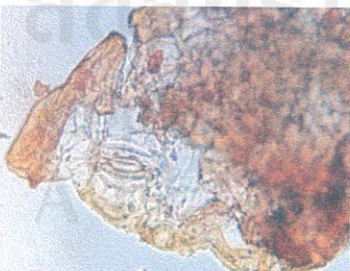
Vascular bundles 200x



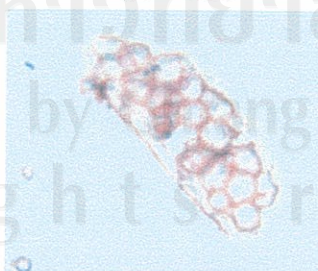
Xylem 200x



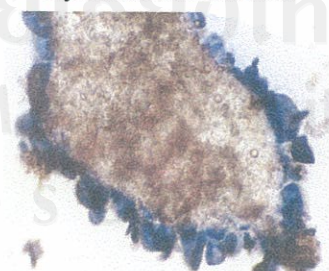
Xylem and sclereid 200x



Stoma with guard cells 400x



Starch grains 200x

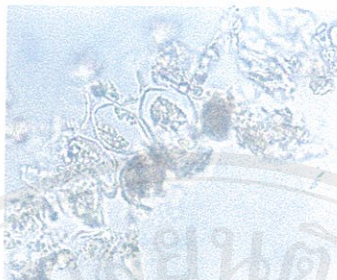


Starch grains (iodine stained) 200x

Appendix 2.5 Diagnostic structures of Herba Asari (Xixin).



Crude drug



Parenchyma with starch grains (iodine stained)



Cork



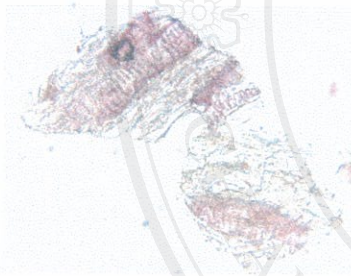
Fiber (saffranin stained)



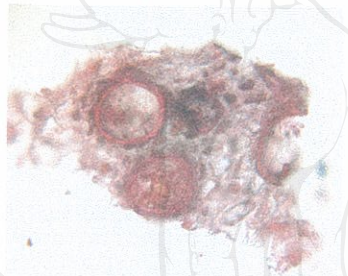
Parenchyma with resin



Parenchyma with resin



Scalariform vessels



Xylem (crossed section)

Appendix 2.6 Diagnostic structures of *Radix Angelicae Sinensis* (Danggui).

ลิขสิทธิ์มหาวิทยาลัยเชียงใหม่

Copyright© by Chiang Mai University

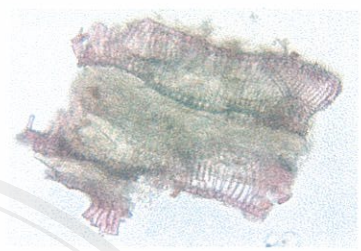
All rights reserved



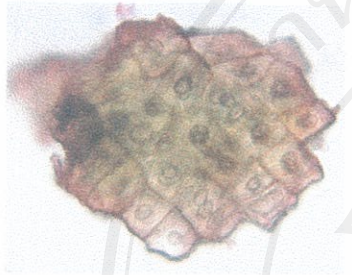
Crude drug



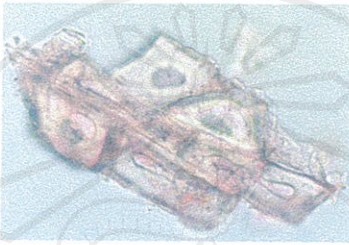
Parenchyma with starch grains (iodine stained)



Parenchyma duct



Stone cells



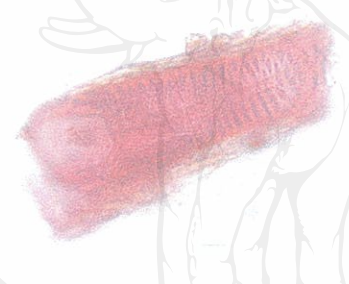
Stone cells



Stone cells



Vessel (saffranin stained)



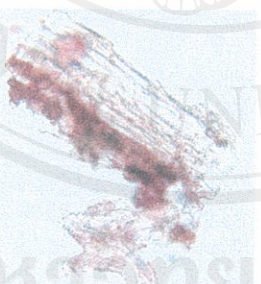
Vascular bundles



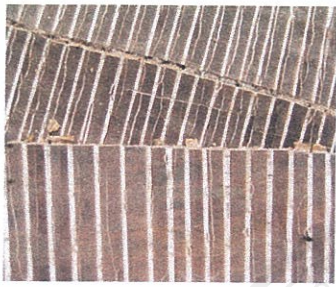
Parenchyma with starch grains



Laminar collenchyma



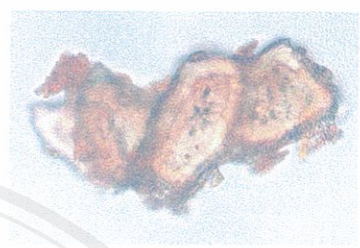
Appendix 2.7 Diagnostic structures of Radix Codonopsis (Dangshen).



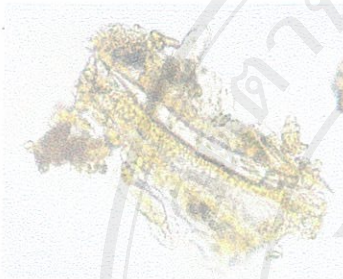
Crude drug



Stone cells



Stone cells



Parenchyma with starch grains



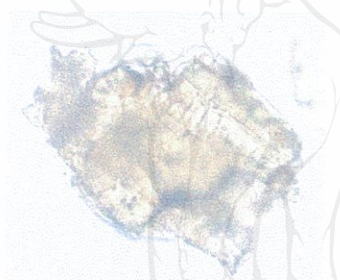
Sclereids



Sclereids (saffranin stained)



Parenchyma and sclereids



Sclereids and Stone cells



Fiber



Starch grains

Appendix 2.8 Diagnostic structures of Cortex Eucommiae (Duzhong).

Copyright © by Chiang Mai University
All rights reserved



Crude drug



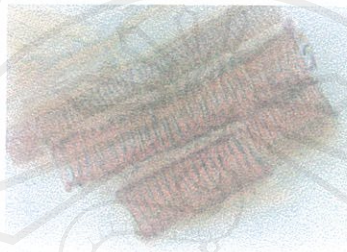
Cork 400x



Cork (saffranin stained) 400x



Xylem (saffranin stained) 100x



Xylem (saffranin stained) 400x



Xylem and fiber 100x



Parenchyma with starch grains
400x



Parenchyma with starch grains
(iodine stained) 400x

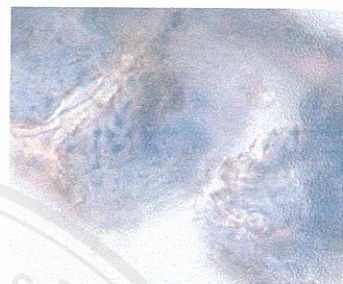
Appendix 2.9 Diagnostic structures of *Radix Angelicae Pubescentis* (Duhuo).



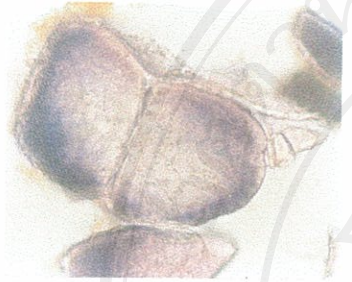
Crude drug



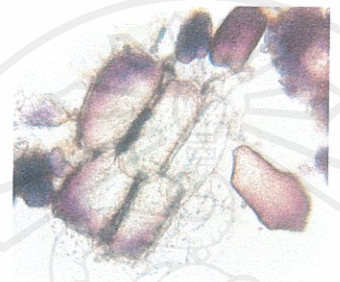
Parenchyma with starch grains 400x



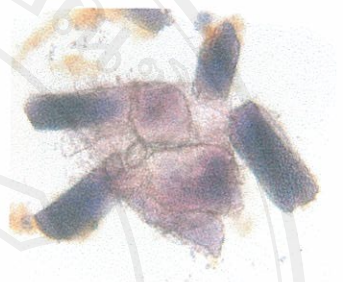
Starch grains 400x



Rosette crystal 200x



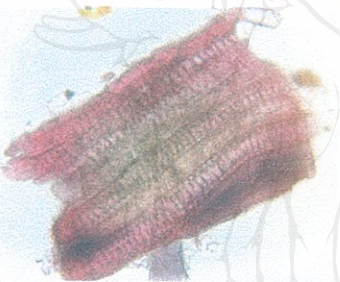
Parenchyma with starch grains (iodine stained)



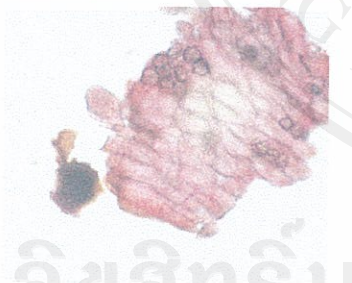
Vessel (saffranin stained) 400x



Tracheid (saffranin stained) 400x



Tracheid (saffranin stained) 200x



Tracheid 200x



Xylem and parenchyma 200x



Appendix 2.10 Diagnostic structures of *Radix Paeoniae Alba* (Baishao).



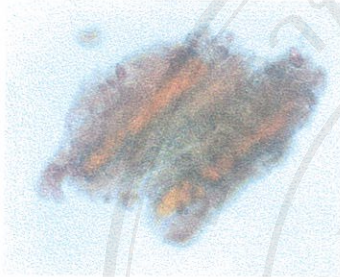
Crude drug



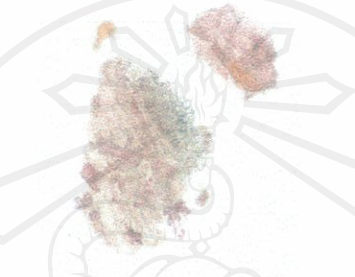
Cork and parenchyma with oil 100x



Cork (saffranin stained) 100x



Duct 100x



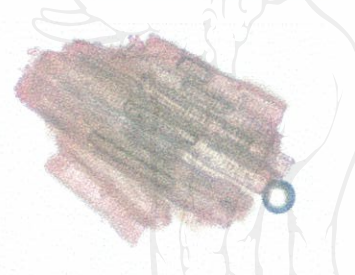
Parenchyma starch grains 100x



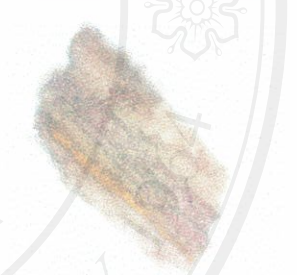
Reticulate vessel 100x



Squamous cells 400x



Xylem 100x

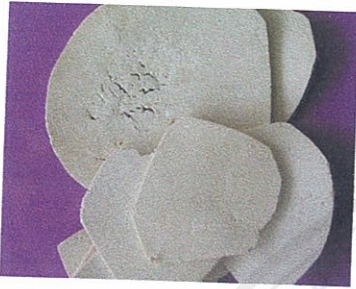


Xylem and duct 100x

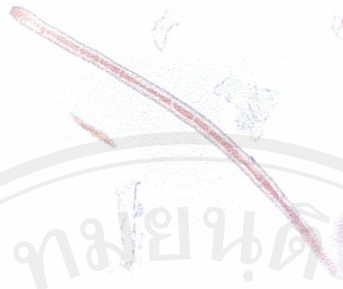


Starch grains and duct 100x

Appendix 2.11 Diagnostic structures of *Radix Ledebouriellae* (Fangfeng).



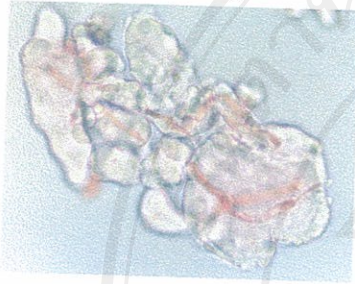
Crude drug



Fiber (saffranin stained)



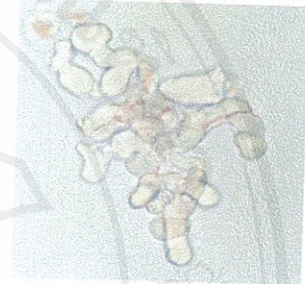
Fiber with parenchyma



Starch grains



Starch grains



Starch grains

Appendix 2.12 Diagnostic structures of Poria (Fuling).

ลิขสิทธิ์มหาวิทยาลัยเชียงใหม่

Copyright© by Chiang Mai University

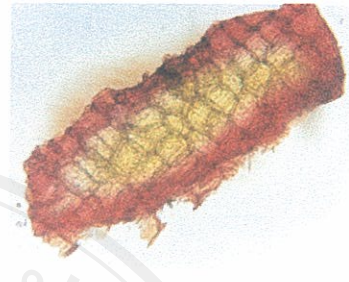
All rights reserved



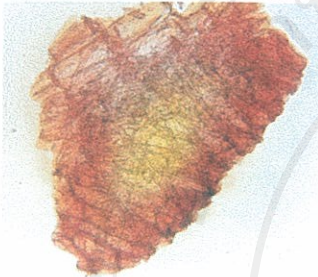
Crude drug



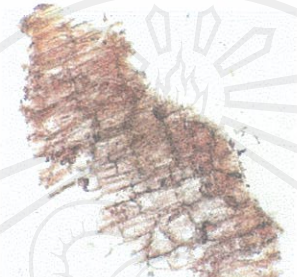
Angular collenchyma under epidermis 400x



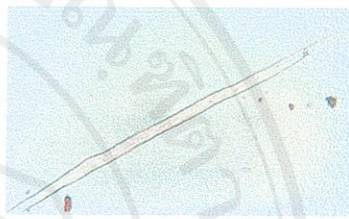
Cork 200x



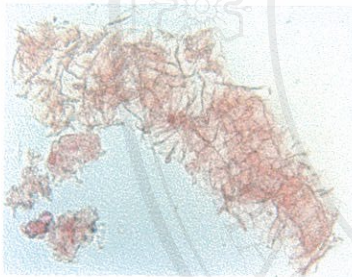
Cork (phelloderm) 400x



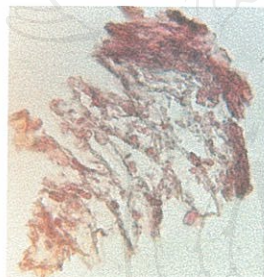
Cork (transversed section) 200x



Fiber 400x



Parenchyma 400x



Parenchyma (transversed section) 400x



Phelloderm 400x



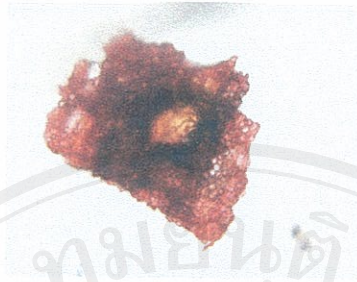
Fragment of xylem 400x

Appendix 2.13 Diagnostic structures of *Radix Achyranthis Bidentatae* (Niuxi).

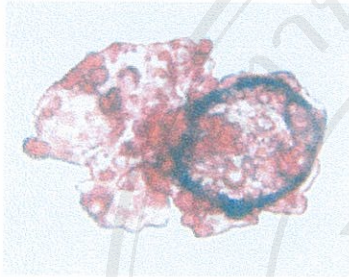
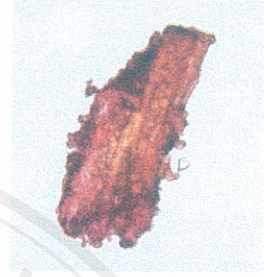
All rights reserved



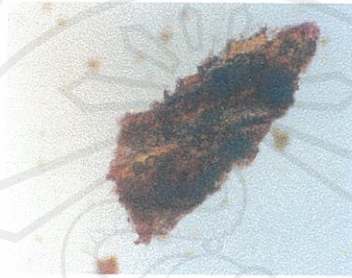
Crude drug



Sclereid with starch grains 400x



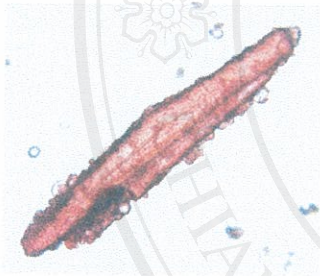
Parenchyma 400x



Oil duct, parenchyma and starch grains 200x



Stone cells 400x



Fiber (saffranin stained) 400x



Appendix 2.14 Diagnostic structures of Cortex Cinnamomi (Rougui).



Crude drug

Appendix 2.15 Radix Rehmanniae Preparata (Shudihuang). There is no diagnostic structure because this drug had been prepared by steaming.

Appendix 2

Ingredients and preparation of Duhuo Jisheng Wan [10-11].

Ingredients:

1.Radix Angelicae Pubescentis	7.75% Duhuo
2.Radix Gentianae Macrophyllae	7.75% Qinjiao
3.Herba Asari	2.50% Xixin
4.Cortex Eucommiae	7.75% Duzhong
5.Radix Achyranthis Bidentatae	7.75% Niuxi
6.Radix Angelicae Sinensis	7.75% Danggui
7.Radix Paeoniae Alba	5.00% Baishao
8.Radix Codonopsis	5.00% Dangshen
9.Radix Glycyrrhizae	5.00% Gancao
10.Herba Taxilli	7.75% Sangjisheng
11.Radix Rehmanniae Preparata	7.75% Shudihuang
12.Rhizoma Chuanxiong	7.75% Chuanxiong
13.Poria	5.00% Fuling
14.Cortex Cinnamomi	7.75% Rougui
15.Radix Ledebouriellae	7.75% Fangfeng

Preparation:

1. Pulverize each ingredients, mix thoroughly together and prepare into honeyed pills.
2. Bake the honeyed pills in the hot air oven until completely dried.
3. Pulverize the honeyed pills.
4. Fill the pulverized powder into capsules, 500 mg per capsule.

Patent: No

Appendix 3

Lequesne's functional index [60]

Assessment criteria	Score
A. Pain or discomfort	
a. During nocturnal bedrest	
- only on movement or in certain positions	1
- also at rest	2
b. Morning stiffness or regressive pain after rising	
- more than 1 but less than 15 min	1
- 15 min or more	2
c. After standing for 30 min	
- Yes	1
d. Pain on movement	
- only after ambulating some distance	1
- after initial ambulation, not increasingly	1
- after initial ambulation, increasingly with continued ambulation	2
e. While getting up from sitting without the help of arms	
- Yes	1
B. Maximum walking distance	
- over 1 kilometer, but limited	1
- about 1 kilometer (15 min)	2
- 500-900 meters (8-15 min)	3
- 300-500 meters	4
- 100-300 meters	5
- less than 100 meters	6
C. Walking aids	
- one stick or crutch	1
- two sticks or crutch	2
D. Activities of daily living*	
- Able to climb up a standard flight of stairs	0 to 2
- Able to climb down a standard flight of stairs	0 to 2
- Able to squat or bend on the knees	0 to 2
- Able to walk on uneven ground	0 to 2

*: without difficulty: 0; with small difficulty: 0.5; moderate difficulty: 1; important difficulty: 1.5; unable: 2.

VITA

Name	Puongtip Kunanusorn
Date of birth	November 15, 1961
Birth place	Chiang Mai
High school	Montfort College Chiang Mai
University	1979-1982 Faculty of Medical Technology Chiang Mai University, Chiang Mai 1983-1986 Faculty of Medicine Chiang Mai University, Chiang Mai
Degree	1983 Bachelor of Science (Medical Technology) Chiang Mai University, Chiang Mai 1987 Master of Science (Pharmacology) Chiang Mai University, Chiang Mai