

Images index

- Images of houses in Boeung Keng Kang collected for this study.







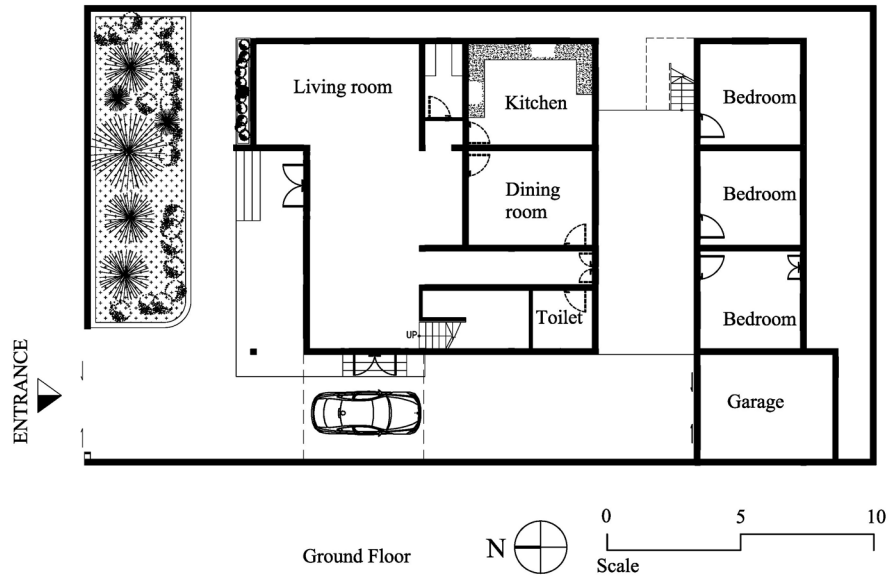


All rights reserved

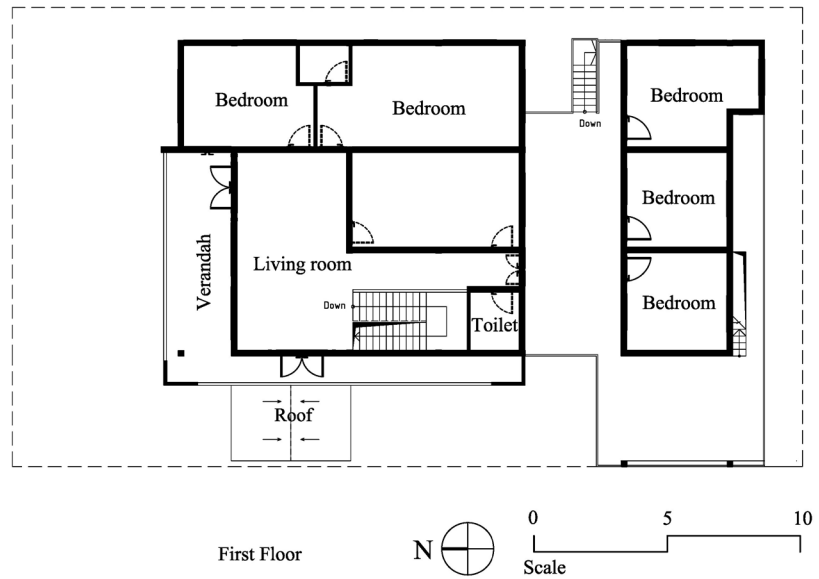
- House No. 15, St 310

- Photographs





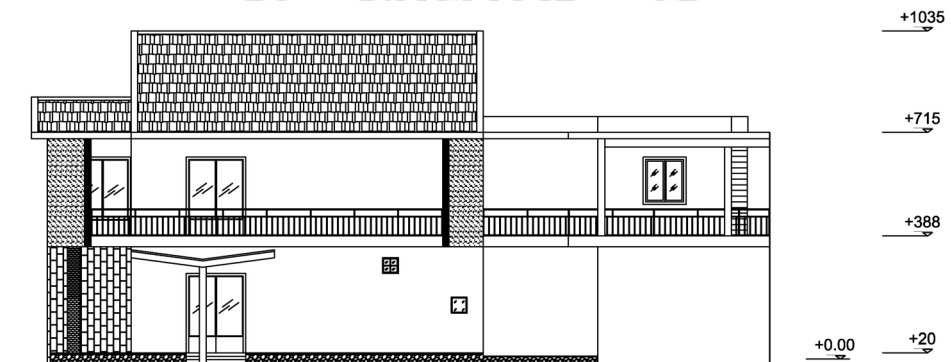
Ground Floor Plan



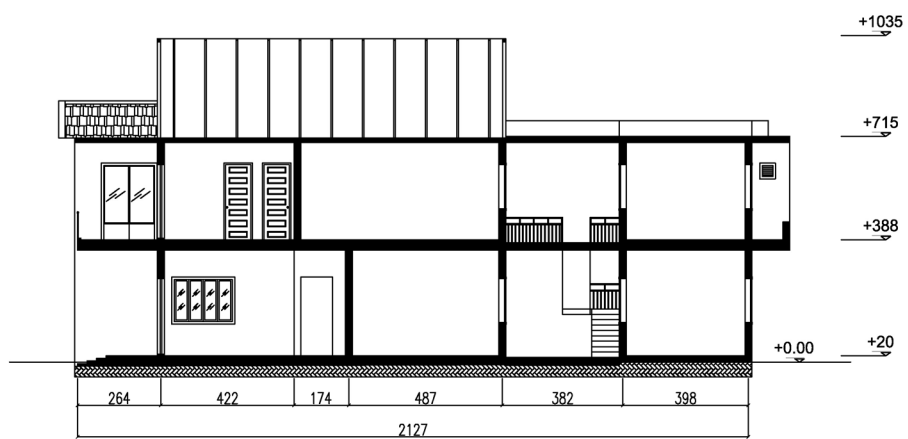
First Floor Plan



Front Elevation



Right Elevation



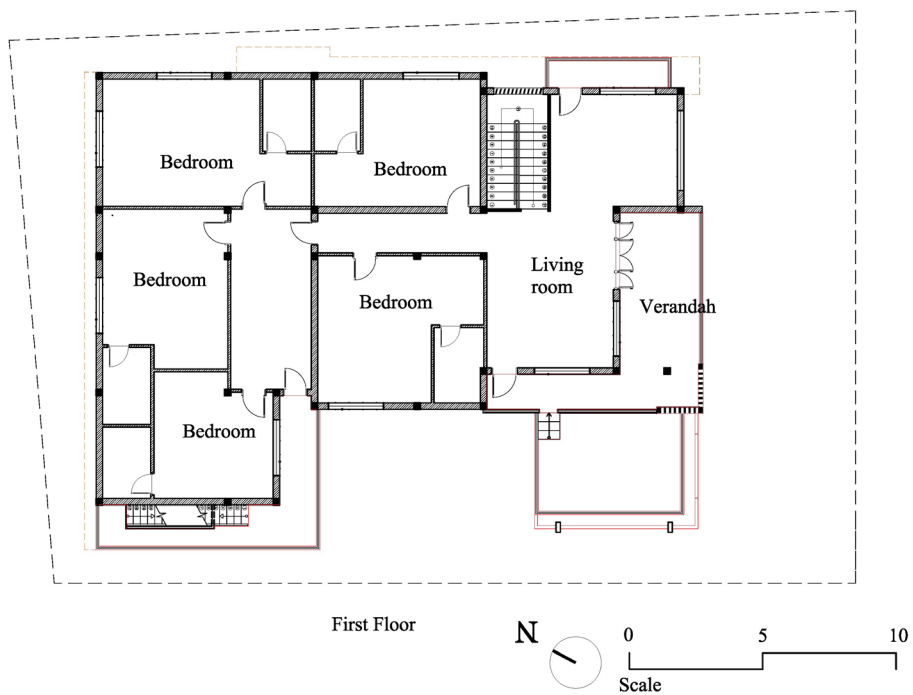
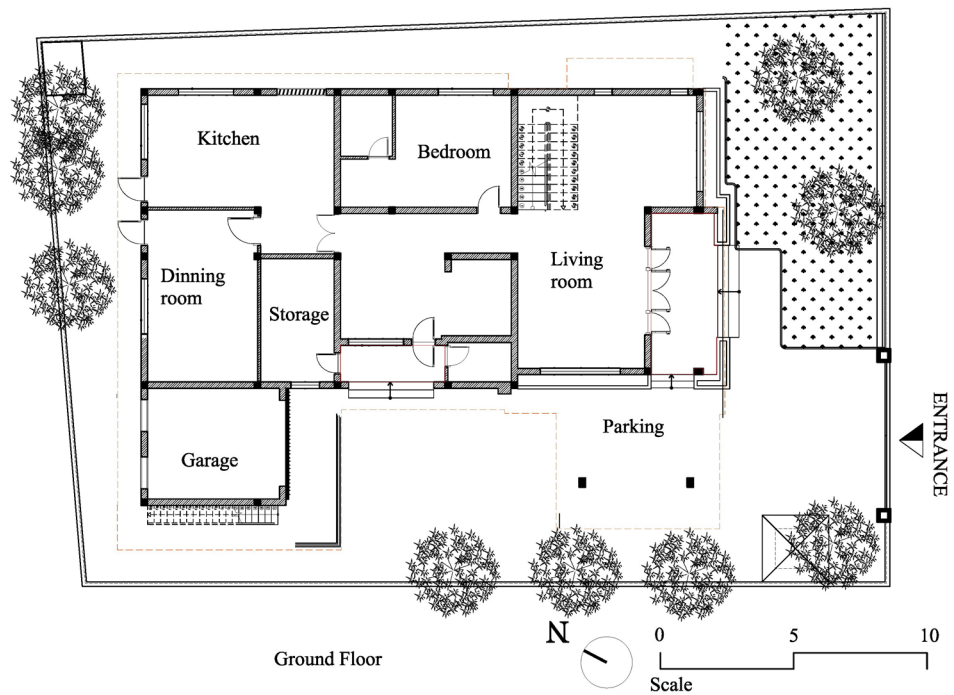
Section

- House No. 34, St 322
 - Photographs



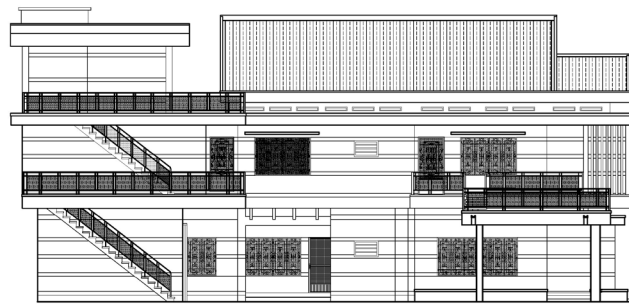
All rights reserved

○ Drawings

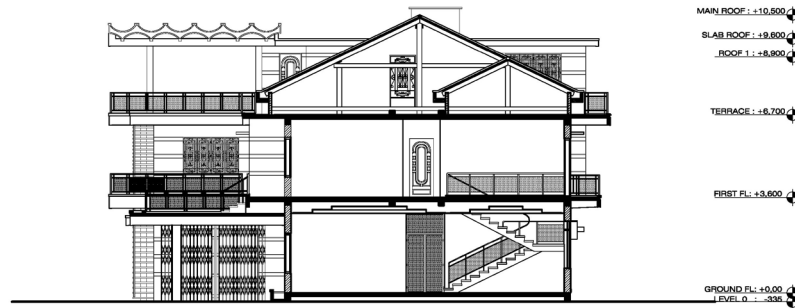




Front Elevation



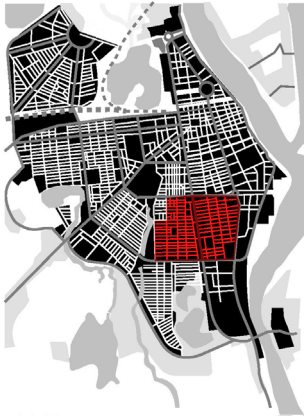
Left Elevation



Section

- Empirical Data for this research

Key map



Phnom Penh city in 1968



Location map of the houses

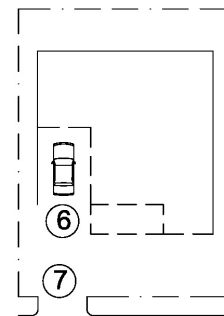


Sketched Drawing



FRONT ELEVATION

Scale bar ————— 4m



PLAN LAYOUT

Scale bar ————— 4m



Features

Present use : Residential

1- Roof : double gable roof (1),

2- Decorative features: small windows (2)

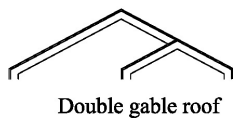
3- Materials : concrete, steel, terrazzo finishing

4- Climatic adaptation features: verandah (4), window canopies(3), large doors and windows

5- Space : approximate house footprint 16 m x 18m, 2 storeys, approximate land size 18m x 25m, cardrop off (6), entrance gate (7),

6- Structure : approximately 4m beam span, vertical column (5)

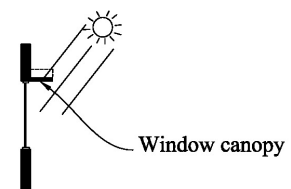
① Roof



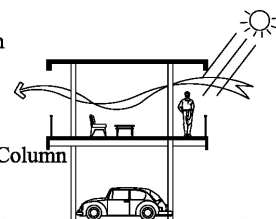
② Decorative element



③ Window canopy



④ Verandah



⑤ Vertical Column



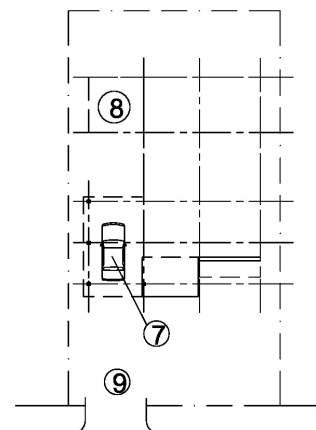


Sketched Drawing



FRONT ELEVATION

Scale bar ——— 4m



PLAN LAYOUT

Scale bar ——— 4m



Features

Present use : boutique hotel.

1- Roof : double gable roof (1),

2- Decorative features: symbol of temple (2), VVV-shape (3)

3- Materials : concrete, steel, terrazzo finishing

4- Climatic adaptation features: verandah (5), window canopy (4), large doors and windows

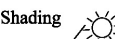
5- Space : approximate house footprint 12 m x 18m, 2 storeys, approximate land size 15m x 25m, cardrop off (7), garage (8), entrance gate (9)

6- Structure : approximately 4m beam span, vertical column (6)

③ VVV-shape element



④ Shading



Window canopy

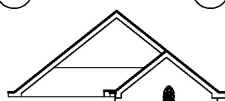
⑤ Verandah



⑥ Vertical column



① Roof

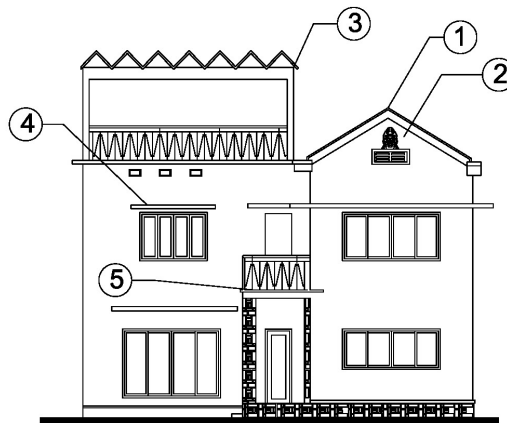


② Temple symbol



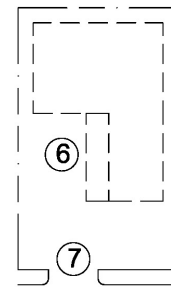


Sketched Drawing



FRONT ELEVATION

Scale bar ——— 4m



PLAN LAYOUT

Scale bar ——— 4m



Features

Present use : Residential

1- Roof : single gable roof (1),

2- Decorative features: temple symbol (2), VVV-shape (3)

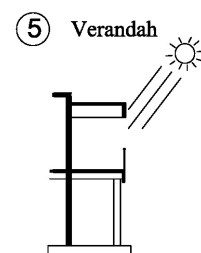
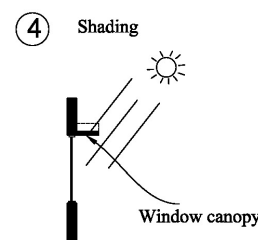
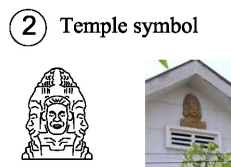
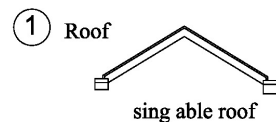
3- Materials : concrete, steel, terrazzo finishing

4- Climatic adaptation features: window canopies (4), verandah (5), large doors and windows

5- Space : approximate house footprint 2 m x 14m, 2 storeys, approximate land size 15m x 25m, car park(6), entrance gate (7)

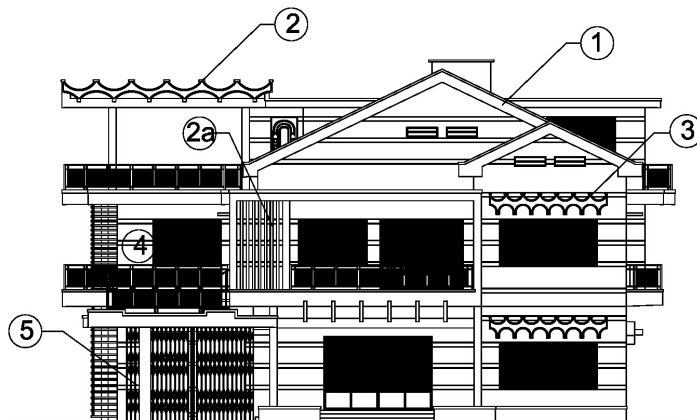
6- Structure : approximately 4m beam span

③ VVV-shape canopy



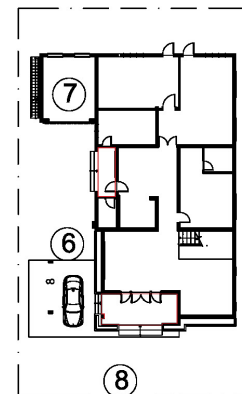


Sketched Drawing



FRONT ELEVATION

Scale bar ——— 4m



PLAN LAYOUT

Scale bar ——— 4m



Features

Present use : Residential

1- Roof : double gable roof (1),

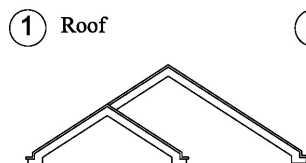
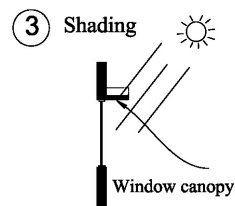
2- Decorative features: VVV-shape (2), Vertical fins (2a)

3- Materials : concrete, steel, terrazzo finishing

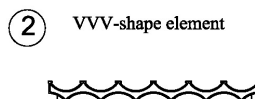
4- Climatic adaptation features: window canopy(3), veranda (4), large door and window

5- Space : approximate house footprint 16 m x 22m, 2 approximate storeys, land size 20m x 28m, car park(6), entrance gate (7)

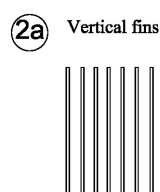
6- Structure : approximately 4m beam span



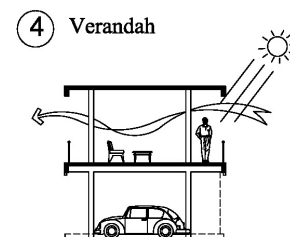
① Roof



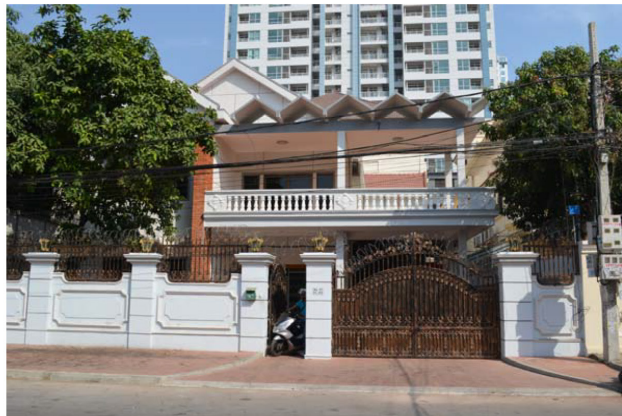
② VVV-shape element



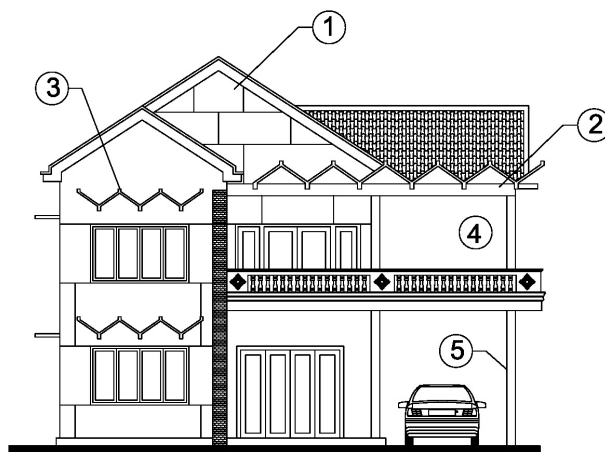
②a Vertical fins



④ Verandah

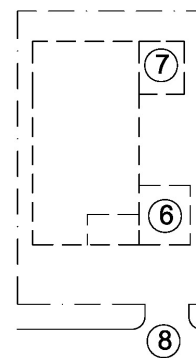


Sketched Drawing



Front Elevation

Scale bar ————— 4m



Plan Layout

Scale bar ————— 4m



Features

Present use : Residential

1- Roof : double gable roof (1),

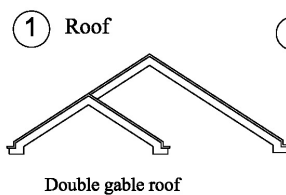
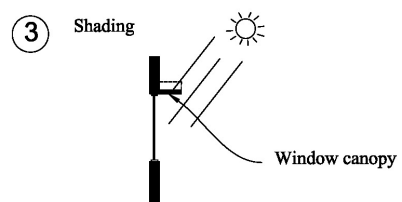
2- Decorative features: VVV-shape canopies (2) (3)

3- Materials : concrete, steel, terrazzo finishing

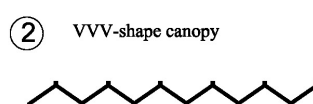
4- Climatic adaptation features: veranda (4), canopies (3), large doors and windows

5- Space : approximate house footprint 12m x 16m, 2 storeys, approximate land size 14m x 25m, cardrop off (6), garage (7), Entrance gate (8)

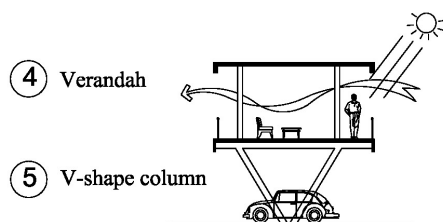
6- Structure : approximately 4m beam span, V-shape column



Double gable roof



VVV-shape canopy



Verandah

V-shape column

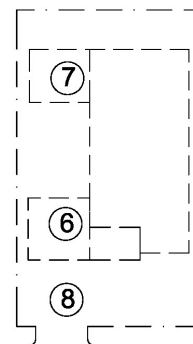


Sketched Drawing



Front Elevation

Scale bar ————— 4m



Plan Layout

Scale bar ————— 4m



Features

Present use : Residential

1- Roof : double gable roof (1),

2- Decorative features: temple symbols (2)

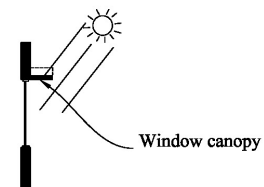
3- Materials : concrete, steel, terrazzo finishing

4- Climatic adaptation features: window canopies (3), verandah (4),
Door and window size

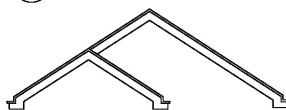
5- Space : approximate house footprint 15m x 120m, 2 storeys,
approximate land size 18m x 28m, car drop off (6),
garage (7), entrance gate (8),

6- Structure : approximate 4m beam span, V-shape column

③ Shading



① Roof

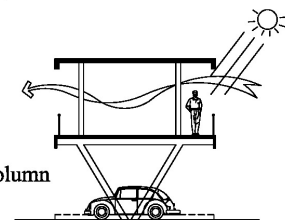


Double gable roof

② Temple symbol



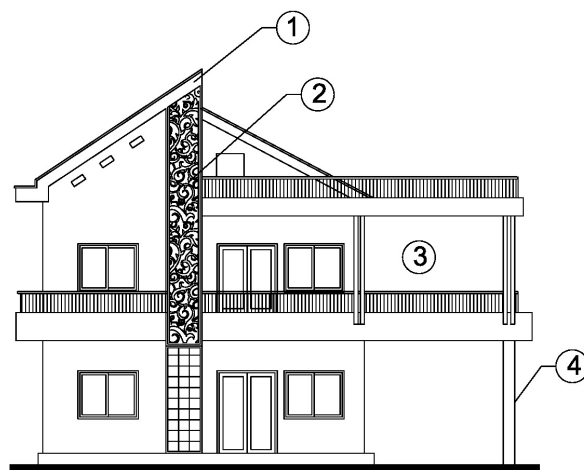
④ Verandah



④ V-shape column

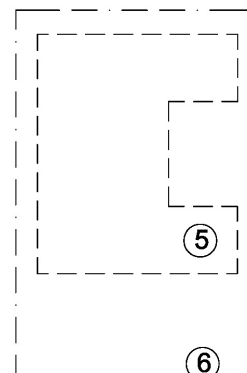


Sketched Drawing



Front Elevation

Scale bar ————— 4m



Plan Layout

Scale bar ————— 4m



Features

Present use : Residential

1- Roof : half gable roof (1),

2- Decorative features: traditional ornament (2)

3- Materials : concrete, steel, paint finishing

4- Climatic adaptation features: verandah (3), large doors and windows

5- Space : approximate house footprint 15m x 20m, 2 storeys,
land size approximately 18m x 25m, car drop off (6),
entrance gate (7)

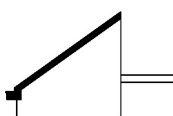
6- Structure : approximate 4m beam span, V-shape column

① Roof

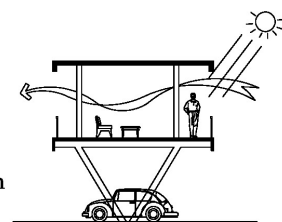
② Traditional Ornament

③ Verandah

④ V-shape column

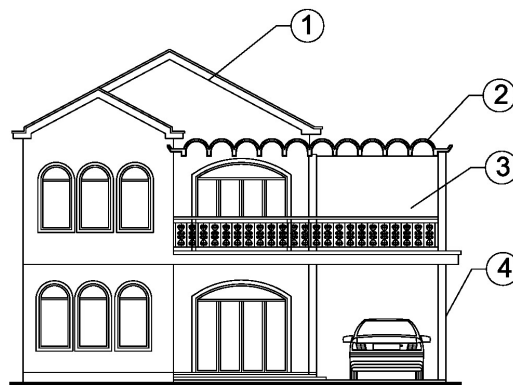


half gable Roof



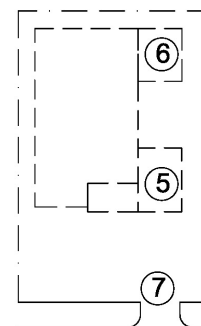


Sketched Drawing



Front Elevation

Scale bar ————— 4m



Plan Layout

Scale bar ————— 4m



Features

Present use : Residential

1- Roof : double gable roof (1),

2- Decorative feautres: vvv-shape(2)

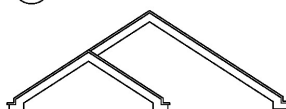
3- Materials : concrete, steel, white plaster finishing

4- Climatic adaptation feautres: verandah (3), doors and windows

5- Space : approximate house footprint 15m x 20m, 2 storeys,
approximate land size 18m x 25m, cardrop off (5),
garage (6), entrance grate (7)

6- Structure : approximate 4m beam span, vertical column (4)

① Roof

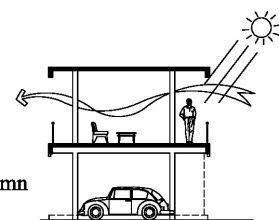


Double gable roof

② Canopy



③ Verandah



④ Vertical column



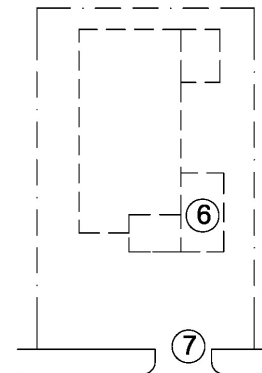


Sketched Drawing



Front Elevation

Scale bar ————— 4m



Plan Layout

Scale bar ————— 4m



Features

Present use : Residential

1- Roof : flat roof (1),

2- Decorative features: wave-shape (2)

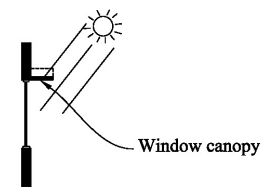
3- Materials : concrete, steel, white plaster finishing

4- Climatic adaptation features: window canopies (3), verandah (4), doors and windows

5- Space : approximate house footprint 14m x 20m, 2 storeys, approximate land size 16m x 25m, carport off (6), entrance gate (7)

6- Structure : approximate 4m beam span, vertical column (5)

③ Shading



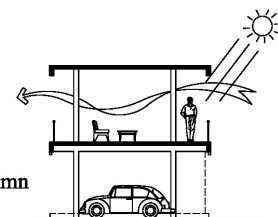
① Roof



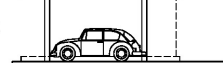
② wave-shape



④ Verandah

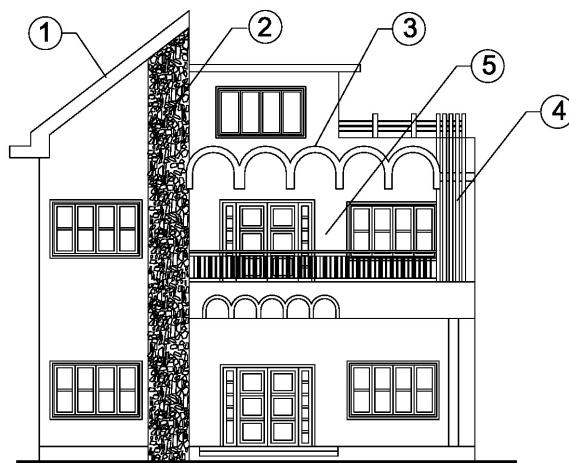


⑤ Vertical column



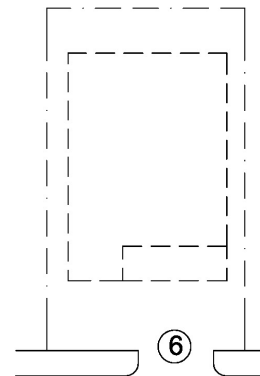


Sketched Drawing



Front Elevation

Scale bar ——— 4m



Plan Layout

Scale bar ——— 4m

Features

Present use : Residential

1- Roof : half gable roof (1),

2- Decorative features: Stone texture (2), U-shape(3)

3- Materials : concrete, steel, plaster finishing

4- Climatic adaptation features: Vertical fins (4), verandah (5), door and window

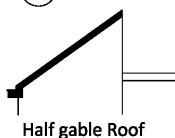
5- Space : approximate house footprint 14m x 20m, 2 storeys,
approximate land size 16m x 25m, entrance grate (6),

6- Structure : approximate 4m beam span

④ Vertical fins



① Roof



Half gable Roof

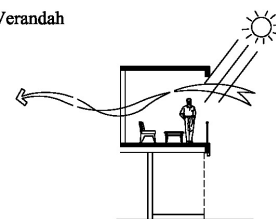
② Stone pattern



③ UUU-shape element

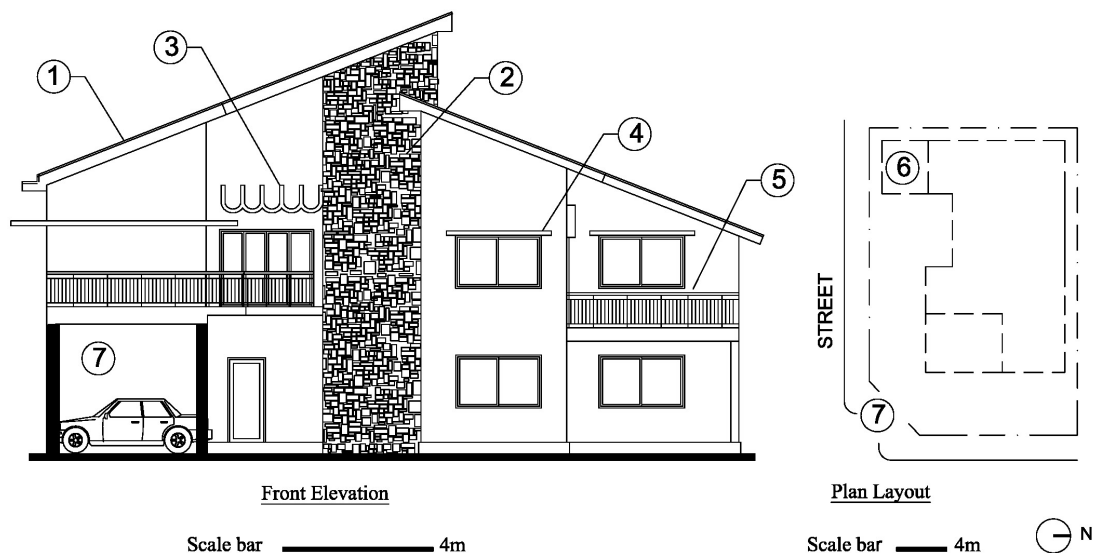


⑤ Verandah





Sketched Drawing



Features

Present use : Restaurant

1- Roof : half gable roof (1),

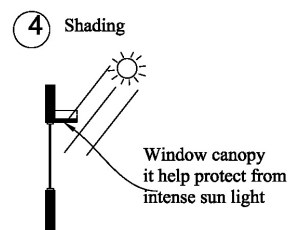
2- Decorative features: Stone texture (2), U-shape (3)

3- Materials : concrete, steel, paint finishing

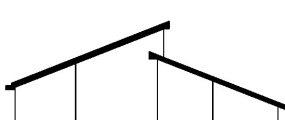
4- Climatic adaptation features: window canopies (4), verandah (5), large doors and windows

5- Space : approximate house footprint 14m x 20m, 2 storeys, approximate land size 16m x 25m, entrance gate (6),

6- Structure : approximate 4m beam span



① Roof



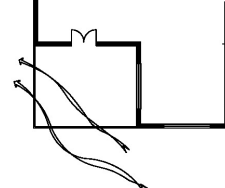
② Roof



③ Design feature



⑤ Verendah



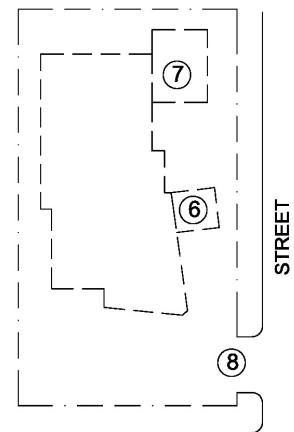


Sketched Drawing



Front Elevation

Scale bar ——— 4m



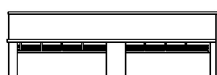
Plan Layout

Scale bar ——— 4m N

Features

- Present use : Residence
 1- Roof : flate roof (1),
 2- Decorative feartures: X-shape (2),
 3- Materials : concrete, steel, terrazzo finishing
 4- Climatic adaptation features: louvers (3),verandah (4) large doors and windows
 5- Space : approximate house footprint 14m x 24m, 2 storeys, approximate land size 18m x 26m, entrance gate (8),
 6- Structure : approximately 4m beam span, X-shape column (5)

① Roof



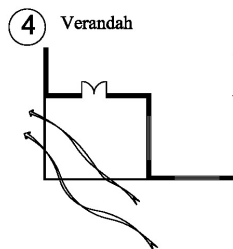
② x-shape



③ Ventilation



④ Verandah

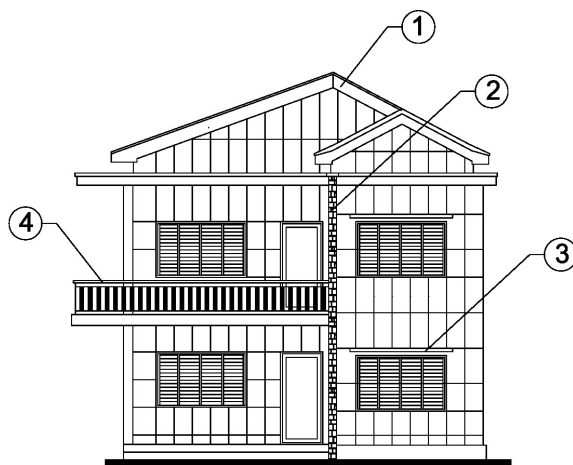


⑤ column shape



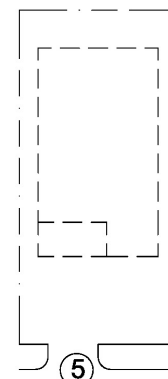


Sketched Drawing



Front Elevation

Scale bar ————— 4m



Plan Layout

Scale bar ————— 4m



Features

Present use : Residence

1- Roof : double gable roof (1),

2- Decorative features: stone pattern (2),

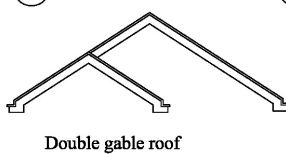
3- Materials : concrete, steel, terrazzo finishing

4- Climatic adaptation features: window canopies (3), verandah (4)
doors and windows

5- Space : approximate house footprint 8m x 16m, 2 storeys,
approximate land size 12m x 25m, entrance gate (5),

6- Structure : approximately 4m beam span

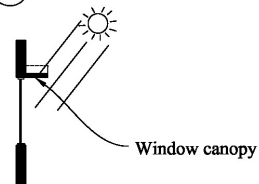
① Roof



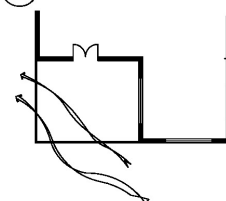
② Stone pattern



③ Shading

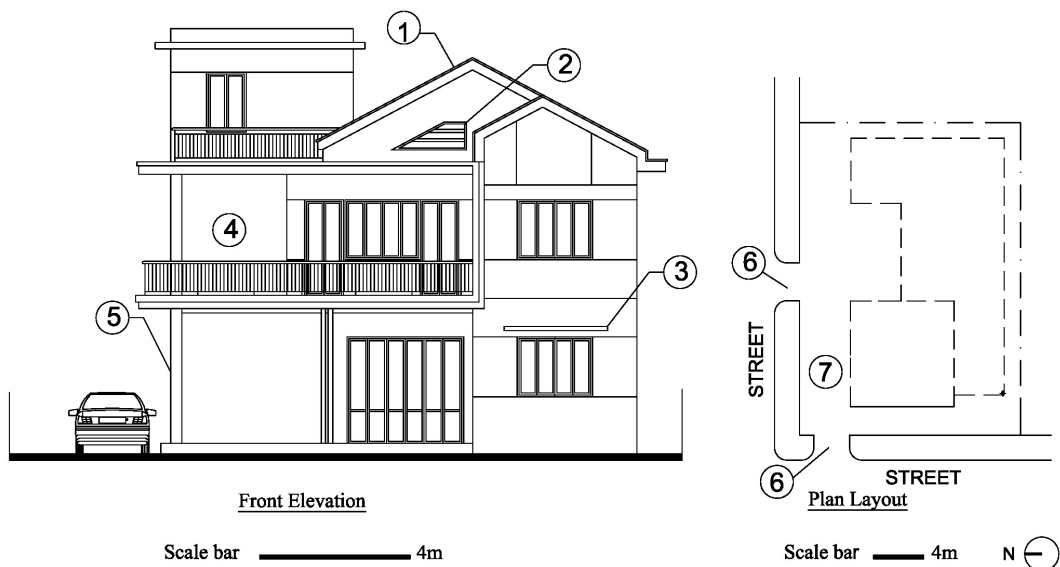


④ Verandah





Sketched Drawing



Features

Present use : Restaurant, tailor shop and office.

1- Roof : double gable roof (1),

2- Decorative features:

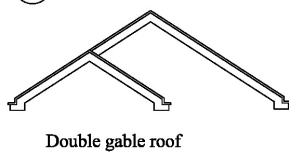
3- Materials : concrete, steel, terrazzo finishing

4- Climatic adaptation features: window canopies (3), verandah (4) doors and windows

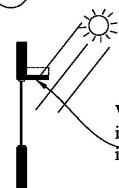
5- Space : approximate house footprint 14m x 20m, 2 storeys, approximate land size 18m x 25m, parking space (7) entrance gate (6)

6- Structure : approximate 4m beam span

① Roof

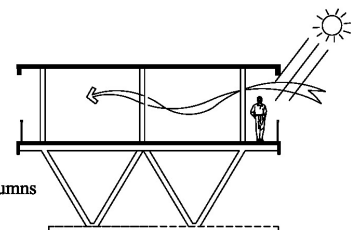


② Shading



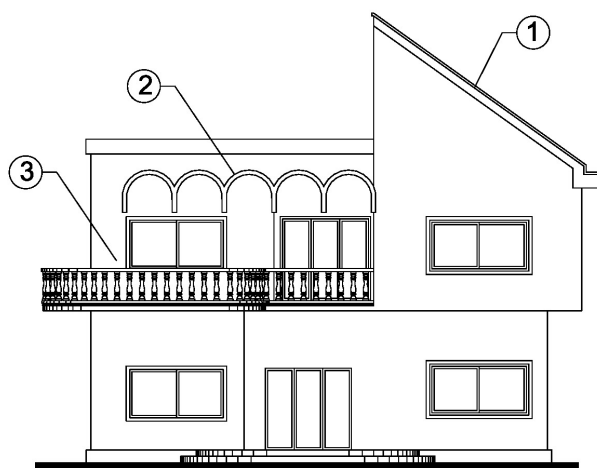
④ Verandah

⑤ V-shape columns



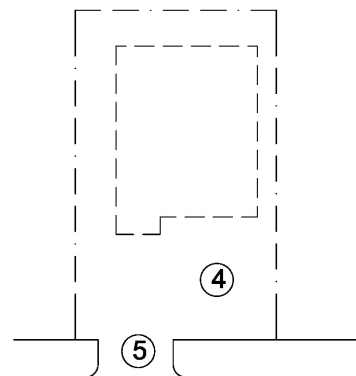


Sketched Drawing



Front Elevation

Scale bar ————— 4m



Plan Layout

Scale bar ————— 4m



Features

Present use : Residence

1- Roof : half gable roof (1), flat roof

2- Decorative features: UUU-shape

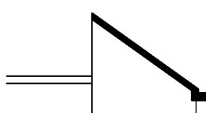
3- Materials : concrete, steel, plastering finishing

4- Climatic adaptation features: verandah (3) doors and windows

5- Space : approximate house footprint 12m x 20m, 2 storeys,
approximate land size 15m x 25m, parking space (4)
entrance gate (5),

6- Structure : approximate 4m beam span

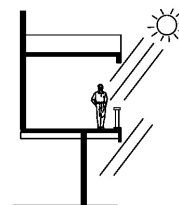
① Roof



② UUU-shape element



③ Verandah



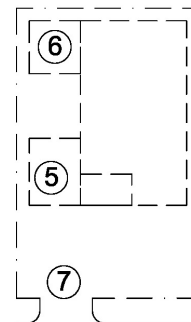


Sketched Drawing



Front Elevation

Scale bar ————— 4m



Plan Layout

Scale bar ————— 4m



Features

Present use : Office

1- Roof : half gable roof (1), flat roof

2- Decorative features: temple symbol

3- Materials : concrete, steel, plastering finishing

4- Climatic adaptation features: verandah (3) doors and windows

5- Space : approximate house footprint 14m x 20m, 2 storeys,
approximate land size 16m x 25m, parking space (5)
garage (6), entrance (7)

6- Structure : approximate 4m beam span, V-shape column (4)

① Roof

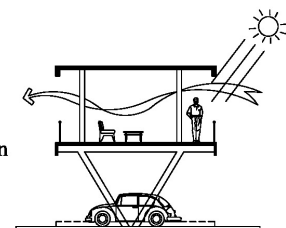


① Temple symbol



③ Verandah

④ V-shape column



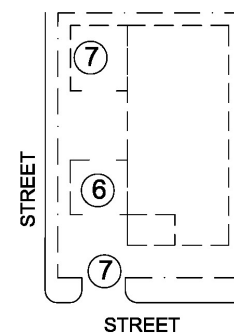


Sketched Drawing



Front Elevation

Scale bar ————— 4m



Plan Layout

Scale bar ————— 4m



Features

Present use : Clinic

1- Roof : half gable roof (1), flat roof

2- Decorative features: traditional ornament

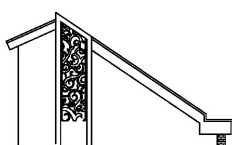
3- Materials : concrete, steel, plastering finishing

4- Climatic adaptation features: window canopies (3), verandah (4) doors and windows

5- Space : approximate house footprint 14m x 22m, 2 storeys, approximate land size 16m x 25m, parking space (6) garage (7), entrance (8)

6- Structure : approximate 4m beam span, V-shape column (4)

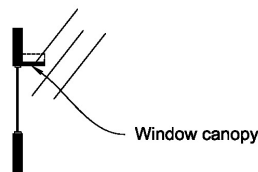
① Roof



② Traditional ornament

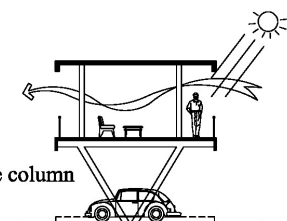


③ Shading



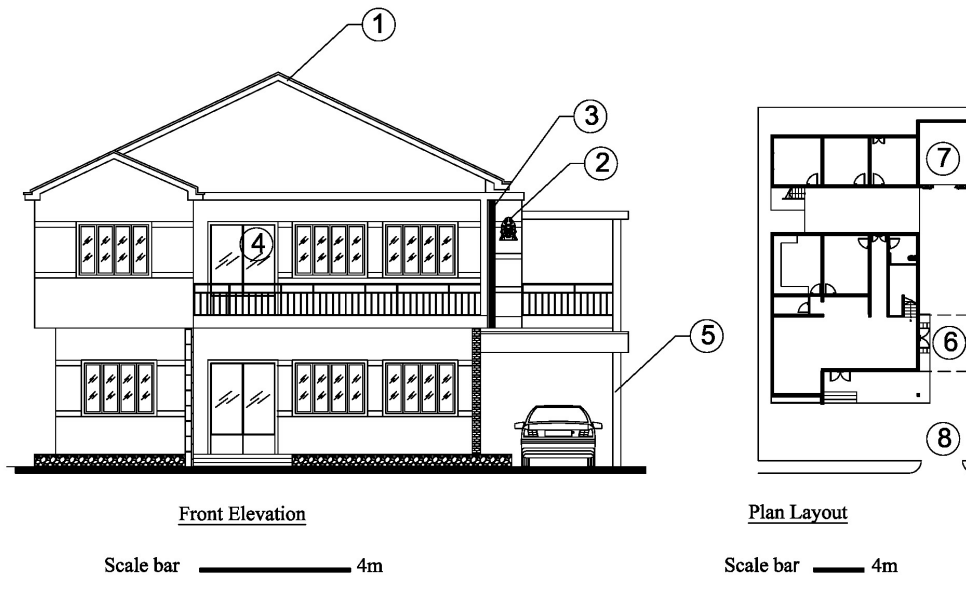
④ Verandah

⑤ V-shape column





Sketched Drawing



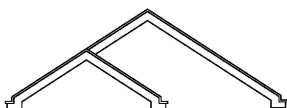
Features

- Present use : Clinic
- 1- Roof : double gable roof (1), flat roof
- 2- Decorative features: temple symbol (2), vertical fins (3)
- 3- Materials : concrete, steel, plastering finishing
- 4- Climatic adaptation features: verandah (4), doors and windows
- 5- Space : house footprint 16m x 22m, 2 storeys,
land size 17m x 29m, parking space (6), garage (7),
entrance (8)
- 6- Structure : approximate 4m beam span, vertical column (4)

- 5 Vertical column



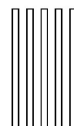
- 1 Roof



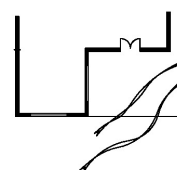
- 3 Divine statue



- 3 Vertical fins

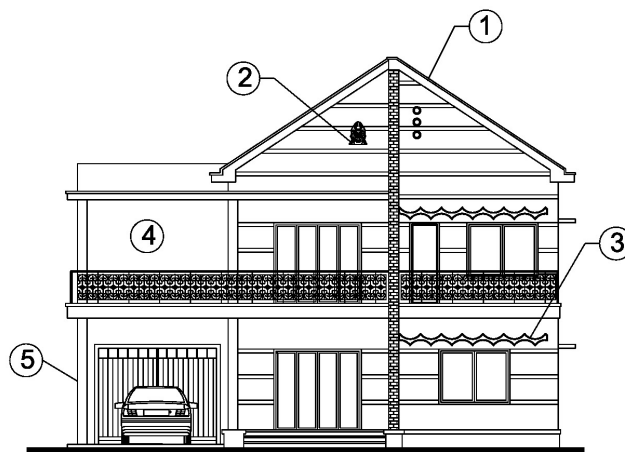


- 4 Verandah



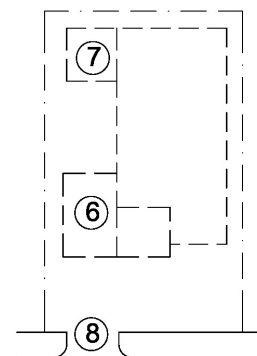


Sketched Drawing



Front Elevation

Scale bar ————— 4m



Plan Layout

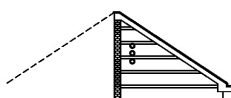
Scale bar ————— 4m



Features

- Present use : Clinic
- 1- Roof : half gable roof (1), flat roof
- 2- Decorative features: temple symbol (2), wave-shape (3)
- 3- Materials : concrete, steel, plastering finishing
- 4- Climatic adaptation features: verandah (4), doors and windows
- 5- Space : approximate house footprint 14m x 20m, 2 storeys, approximate land size 16m x 25m, parking space (6), garage (7), entrance (8)
- 6- Structure : approximate 4m beam span, V-shape column (4)

① Roof



Half gable roof

② Temple symbol

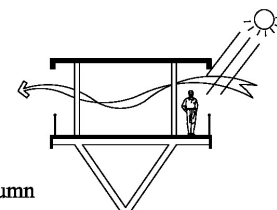


③ Wave-shape



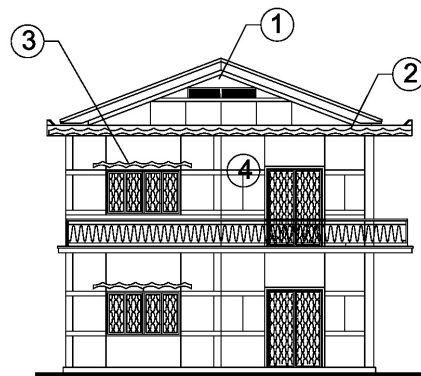
④ Verandah

⑤ V-shape column



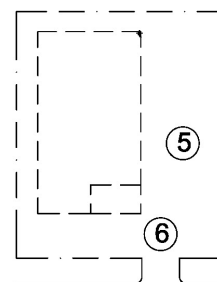


Sketched Drawing



Front Elevation

Scale bar ————— 4m



Plan Layout

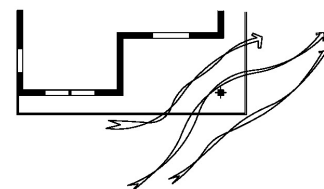
Scale bar ————— 4m



Features

- Present use : Clinic
- 1- Roof : single gable roof (1), flat roof
- 2- Decorative features: wave-shape (2)
- 3- Materials : concrete, steel, plastering finishing
- 4- Climatic adaptation features: window canopy (3) verandah (4), doors and windows
- 5- Space : approximate house footprint 8m x 16m, 2 storeys, approximate land size 14m x 25m, parking space (5), entrance (6)
- 6- Structure : approximate 4m beam span

④ Verandah



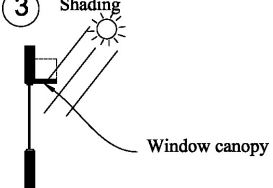
① Roof



② Roof edge



③ Shading



CURRICULUM VITAE

Author's Name	Mr. Sakona Loeung	
Date of Birth	30 April 1989	
Place of Birth	Cambodia	
Education	2017	Master Degree in Architecture, Chiang Mai University
	2013	Bachelor Degree in Architecture, Royal University of Fine Arts
	2011	Bachelor Degree in English-Khmer Translation and Interpretation, Institute of Foreign Languages
Scholarship	2008-2013	Royal University of Fine Arts
	2014-2015	Chiang Mai University's Graduate Scholarship for AEC Students
	Research Fund	Chiang Mai University's Graduate Research Scholarships.
Experience	2013 Site Architect	Bonteaysrei Engineering and Construction, Phnom Penh
	2014 Swimming pool designer	Empire Pool Company, Phnom Penh

