

## CHAPTER 3

### Research Methodologies

#### 3.1 Research Methodologies

A study Determinants of the Formation of Child Poverty Fund in Thailand in this time will study;

1. Study child poverty solutions in many countries
2. Study the supportive funds for the poor children in Thailand.
3. Explore poor children support in overseas and help provision via funds in Thailand.

From policy review many countries establish policy to reduce child poverty but an interesting point that is in Thailand does not have policy or fund to help poor children like them. Therefore it is a good reason to study determinants of the formation of child poverty fund in Thailand.

First method, this study uses policy review to analyze and review about the policy that other countries establish to reduce child poverty. Then study the Child Poverty Fund from other countries in order to;

- 1) Extract the common knowledge
- 2) Select the knowledge that is appropriate

Second method, to fulfill the second and third objective, to design guideline of child poverty fund in Thailand after doing policy review and compare child poverty solutions of other countries with Thailand, to find the factor that affect poor children such as family size, location, education, household income, household debt, household saving, productivity, and capital value.

Third method, design guideline of child poverty fund in Thailand after doing policy review and context analysis model. From policy review, the factor that affect poor children such as family size, location, education, household income, household debt, household saving, productivity, and capital value.

From review the child poverty fund, Thailand can have format of child poverty fund such as;

- The fund's format 1: From review, If the factors affecting consist of family size, location, household income, household debt, household saving, productivity, and capital value that affect to poverty, in this fund should has format to help consist of;

- Government should create program to help these families such as cash assistance, food stamp, or Medicaid since their birth and some parents need to special services health such as nurse home visiting, telephone advice line, and child health record.

- Government should intervene on parents' working.

So the characteristic of poor children who can receive this fund should be consist of;

- To help the children who live in the household that have income lower than the poverty line.

- To help the children who live in the household that not working.

- The fund's format 2: From the review, If the factors affecting consist of location, and education that affect to poverty, in this fund should has format to help consist of;

- Provide extra help that their children need such as state will pay transportation for poor children.

- If poor students have trouble in school, these children can receive education services such as tutoring or remedial help, it is program only for low income families.

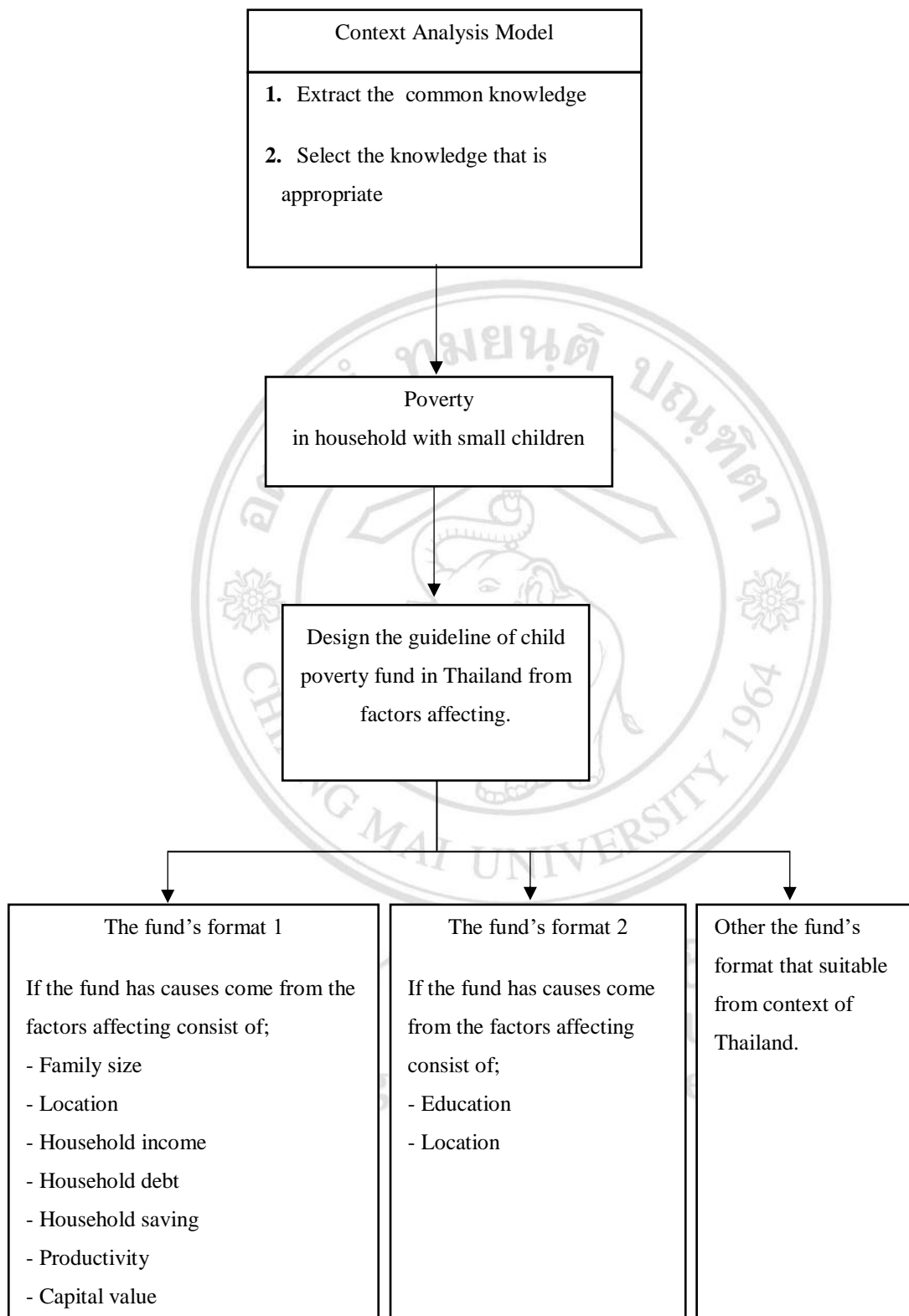
So the characteristic of poor children who can receive this fund should be consist of;

- To help the children who live in the household that have income lower than the poverty line.
- To help the children who live in the household that house located in rural area.
- To help the children who do not receive standard education.



ลิขสิทธิ์มหาวิทยาลัยเชียงใหม่  
Copyright© by Chiang Mai University  
All rights reserved

### 3.2 Conceptual Framework



**Figure 3.1:** Conceptual Framework.