

APPENDIX A

Model Based Inversion Analysis

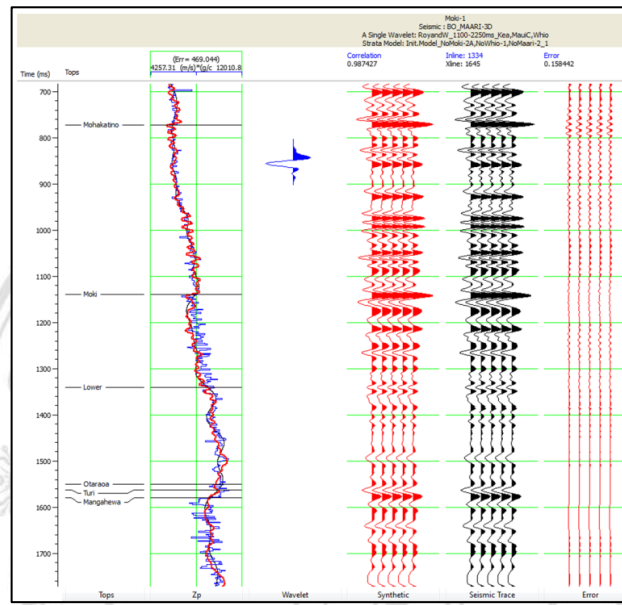


Figure A.1: Acoustic-impedance inversion analysis at Kea-1

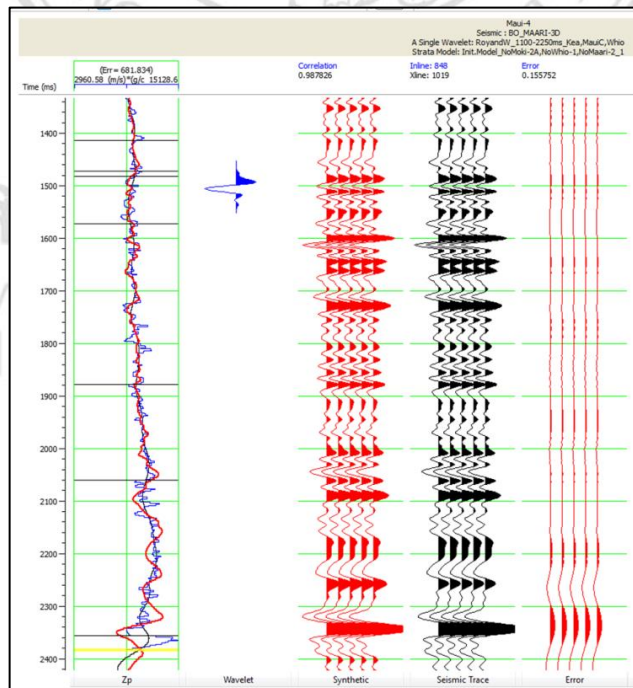


Figure A.2: Acoustic-impedance inversion analysis at Maui-4

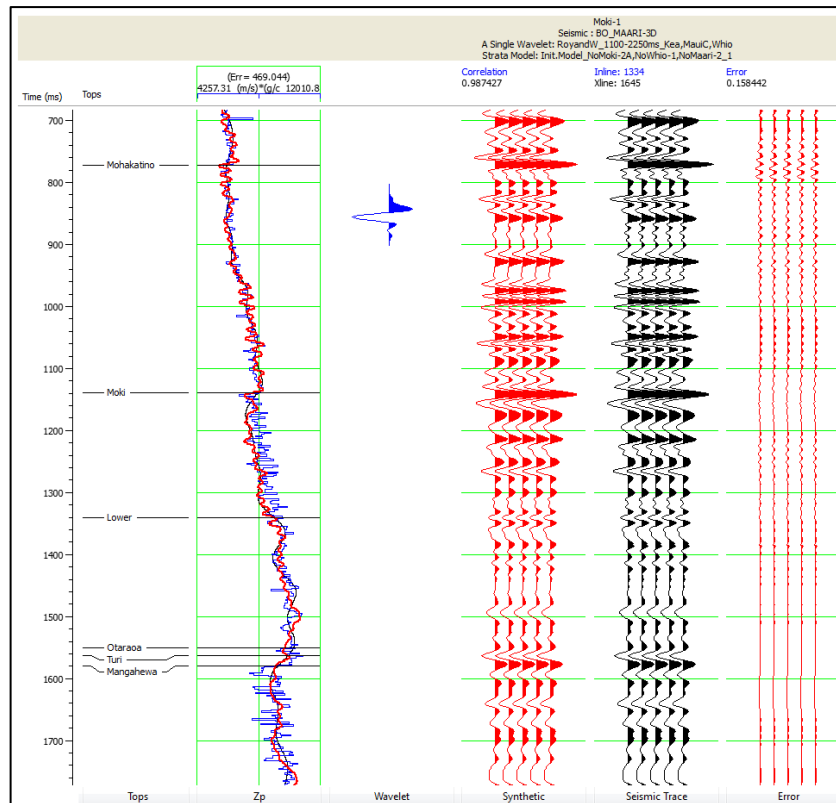


Figure A.3: Acoustic-impedance inversion analysis at Moki-1

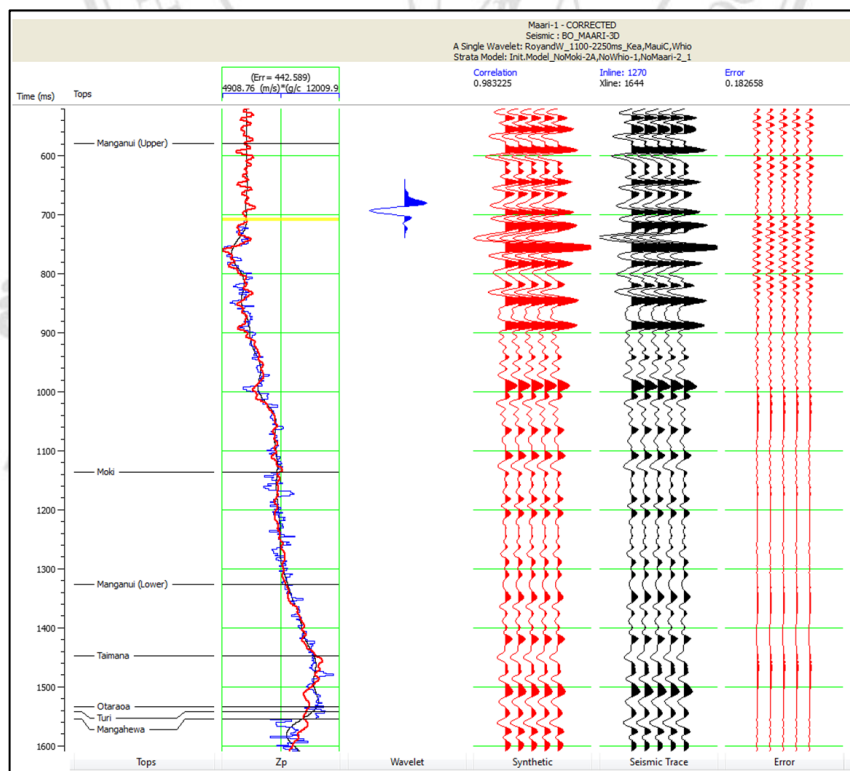


Figure A.4: Acoustic-impedance inversion analysis at Maari-1

CURRICULUM VITAE

Author's Name Mr. Cauê Vivian Hess

Date of Birth February 17th, 1992

Place of Birth Santa Maria – Rio Grande do Sul, Brazil

Education 2010 – 2015, Bachelor's Degree in Geophysics at Universidade Federal do Pampa, Brazil – with a sandwich period at National University of Ireland (Galway), School of Natural Sciences (B.Sc. in Earth and Ocean Sciences from Aug/2013 to Dec/2014.

Scholarship Aug/2013 – Dec/2014, Science Without Borders program sponsored by CAPES (Brazilian Federal Agency) as part of a Bachelor's sandwich degree.

 2016 – 2017, full scholarship from PTT Exploration and Production Public Company Limited (Thailand) to study in the Petroleum Geophysics M.Sc. Program, Department of Geological Sciences, Chiang Mai University - Thailand.

Experience Mar/2016 – Jul/2016, Assistant Geophysicist, GEODECON – Geology and Geophysics Ltd., Curitiba/PR – Brazil.

