



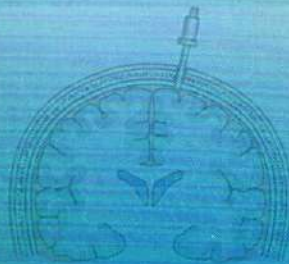
Activate your eBook

LIPPINCOTT®

Nursing Procedures

EIGHTH EDITION

- Evidence-Based Bedside Care
- Equipment
- Nursing Alerts
- Complications
- Patient Teaching
- Documentation



Wolters Kluwer

Contents

Contributors and consultants viii

How to use this book x

ALPHABETICAL LISTING OF NURSING PROCEDURES ■ 1

A

Abdominal paracentesis, assisting 1
Admission 3
Admixture of drugs in a syringe 6
Advance directives 9
Airborne precautions 12
Air-fluidized therapy bed use 14
Alignment and pressure-reducing devices 16
Antiembolism stocking application 18
Aquapheresis 21
Arterial and venous sheath removal 25
Arterial pressure monitoring 28
Arterial puncture for blood gas analysis 31
Assessment techniques 34
Autologous blood collection, preoperative 36
Autologous blood transfusion, perioperative 38
Automated external defibrillation 41

B

Back care 43
Balloon valvuloplasty care 45
Bariatric bed use 49
Bed bath 50
Bed equipment, supplemental 53
Bed-making, occupied 55
Bed-making, unoccupied 58
Bedpan and urinal use 60
Bedside spirometry 62
Biliary drainage catheter care 64
Binder application 67
Bispectral index monitoring 68
Bladder ultrasonography 71
Blood culture sample collection 72
Blood glucose monitoring 75
Blood pressure assessment 77
Body jewelry removal 81
Body mechanics 83
Bone marrow aspiration and biopsy 84
Brain tissue oxygen monitoring and care 87
Brain tissue oxygen monitoring device, insertion, assisting 89
Bronchoscopy, assisting 91
Buccal and sublingual drug administration 95
Burn care 96
Burn dressing application, biological and synthetic 101

C

Canes 104
Capillary blood gas sampling 105
Carbon monoxide oximetry 107
Cardiac monitoring 108
Cardiac output measurement 113
Cardiopulmonary resuscitation, adult 116
Cardiopulmonary resuscitation, child 122

Cardiopulmonary resuscitation, infant 126
Cardioversion, synchronized 128
Care plan preparation 130
Cast application 132
Cast removal 137
Central venous access catheter 138
Central venous pressure monitoring 148
Cerebrospinal fluid drainage management 152
Cervical collar application 155
Chemotherapeutic drug administration 157
Chemotherapeutic drug preparation and handling 162
Chest physiotherapy 164
Chest tube drainage system monitoring and care 168
Chest tube drainage system setup 173
Chest tube insertion, assisting 175
Chest tube removal, assisting 179
Clavicle strap application 181
Closed-wound drain management 183
Code management 185
Cold application 190
Colostomy and ileostomy care 193
Colostomy irrigation 196
Contact lens care 198
Contact precautions 200
Continent ileostomy care 204
Continuous ambulatory peritoneal dialysis 208
Continuous bladder irrigation 212
Continuous passive motion device use 215
Continuous positive airway pressure use 217
Continuous renal replacement therapy 220
Credé maneuver 224
Cricothyrotomy, assisting 225
Crutch use 228

D

Defibrillation 231
Discharge 234
Documentation 236
Doppler use 239
Droplet precautions 240
Drug and alcohol specimen collection 242
Dying patient care 245

E

Eardrop instillation 247
Ear irrigation 249
Elastic bandage application 251
Electrical bone growth stimulation 253
Electrocardiogram, 12-lead 255
Electrocardiogram, right chest lead 258
Electrocardiogram, posterior chest lead 260
Electrocardiogram, signal-averaged 262
Endoscopic therapy, assisting 264
Endotracheal drug administration 267
Endotracheal intubation 269
Endotracheal tube care 274
End-tidal carbon dioxide monitoring 277

Enema administration 280
 Epicardial pacing and care 283
 Epidural analgesic administration 287
 Esophagogastric tamponade tube care 290
 Esophagogastric tamponade tube insertion and removal 293
 External fixation management 296
 Eye care 299
 Eye compress application 300
 Eye irrigation 301
 Eye medication administration 305

F

Fall prevention and management 307
 Fecal impaction removal, digital 309
 Fecal occult blood tests 311
 Feeding 313
 Feeding tube insertion and removal 316
 Femoral compression 319
 Foot care 320
 Foreign-body airway obstruction and management 322
 Functional assessment 324

G

Gait belt use 326
 Gastric lavage 328
 Gastrostomy feeding button reinsertion 331

H

Hair care 332
 Halo-vest traction management 333
 Hand hygiene 336
 Hearing aid care 339
 Heat application 340
 Height and weight measurement 343
 Hemodialysis 345
 Hemoglobin testing, bedside 352
 Hip arthroplasty care 354
 Hour-of-sleep care 357
 Humidifier therapy 359
 Hyperthermia-hypothermia blanket use 361

I

IM injection 364
 Impaired swallowing and aspiration precautions 368
 Implanted port use 371
 Incentive spirometry 378
 Incontinence device application, male 380
 Incontinence management, fecal 382
 Incontinence management, urinary 384
 Indwelling urinary catheter care and removal 386
 Indwelling urinary catheter insertion 390
 Indwelling urinary catheter irrigation 394
 Intermittent infusion device drug administration 396
 Intermittent infusion device flushing and locking 399
 Intermittent infusion device insertion 401
 Intermittent positive-pressure breathing 405
 Intermittent urinary catheterization 407
 Internal fixation management 410
 Intra-abdominal pressure monitoring 414
 Intra-aortic balloon counterpulsation 416
 Intracranial pressure monitoring 423
 Intradermal injection 429
 Intraosseous infusion 431
 Intrapleural drug administration 434

Iontophoresis 438
 IV bolus injection 439
 IV catheter insertion and removal 443
 IV catheter maintenance 447
 IV infusion rates and manual control 450
 IV pump use 452
 IV secondary line drug infusion 455
 IV therapy preparation 458

J

Jugular venous oxygen saturation monitoring 460

K

Knee arthroplasty postprocedure care 463

L

Laryngeal mask airway insertion 465
 Laser therapy, assisting 470
 Latex allergy protocol 472
 Lipid emulsion administration 474
 Low-air-loss therapy bed use 477
 Lumbar puncture, assisting 479

M

Manual ventilation 482
 Massive infusion device use 483
 Mechanical traction management 487
 Mechanical ventilation, positive pressure 489
 Metered-dose inhaler use 494
 Mixed venous oxygen saturation monitoring 496
 Moderate sedation 498
 Mucus clearance device 502

N

Nasal bridle insertion and removal 503
 Nasal irrigation 507
 Nasal medication administration 509
 Nasal packing, assisting 511
 Nasoenteric-decompression tube care 515
 Nasoenteric-decompression tube insertion and removal 517
 Nasogastric tube care 519
 Nasogastric tube drug instillation 521
 Nasogastric tube insertion and removal 524
 Nasopharyngeal airway insertion and care 528
 Nebulizer therapy 530
 Negative-pressure wound therapy 534
 Nephrostomy and cystostomy tube dressing changes 538
 Neurologic assessment 540
 Nutritional screening 544

O

Ommaya reservoir drug infusion 548
 Oral care 552
 Oral drug administration 556
 Organ donor, identification 559
 Oronasopharyngeal suction 560
 Oropharyngeal airway insertion and care 563
 Oxygen administration 565

P

Pain management 570
 Parenteral nutrition administration 572
 Parenteral nutrition monitoring 578
 Passive range-of-motion exercises 580

Patient-controlled analgesia 584
 Percutaneous coronary intervention care 587
 Pericardiocentesis, assisting 592
 Perineal care 594
 Peripherally inserted central catheter use 596
 Peripheral nerve stimulation 604
 Peritoneal dialysis 607
 Peritoneal lavage, assisting 611
 Permanent pacemaker care 614
 Personal protective equipment 618
 Postmortem care 620
 Postoperative care 622
 Preoperative care 626
 Preoperative skin preparation 629
 Pressure dressing application 631
 Pressure injury care 632
 Progressive ambulation 638
 Prone positioning 640
 Protective environment guidelines 644
 Pulmonary artery pressure and pulmonary artery occlusion
 pressure monitoring 645
 Pulse amplitude monitoring 648
 Pulse assessment 650
 Pulse oximetry 652

R

Radiation implant therapy 655
 Radiation therapy, external 657
 Radioactive iodine therapy 659
 Rectal suppositories and ointments 661
 Rectal tube insertion and removal 663
 Residual limb care 664
 Respiration assessment 667
 Restraint application 669
 Ring removal 673
 Rotation beds 675

S

Safe medication administration practices, general 678
 Seizure management 681
 Self-catheterization 684
 Sequential compression therapy 687
 Sexual assault examination 689
 Sharp debridement 691
 Shaving 693
 Sitz bath 694
 Skin biopsy 696
 Skin graft care 698
 Skin staple and clip removal 701
 Soaks 703
 Spiritual care 704
 Splint application 706
 Sponge bath 709
 Sputum collection 710
 Standard precautions 713
 Sterile technique, basic 714
 Stool specimen collection 717
 ST-segment monitoring 718
 Subcutaneous injection 720
 Subdermal drug implants 724
 Surgical drain removal 726
 Surgical wound management 727
 Suture removal 730
 Swab specimen collection 733

T

Temperature assessment 736
 Therapeutic bath 738
 Thoracentesis, assisting 739
 Thoracic electrical bioimpedance monitoring 742
 Tilt table 743
 Topical skin drug application 745
 Tracheal cuff pressure measurement 746
 Tracheal suctioning, intubated patient 748
 Tracheostomy and ventilator speaking valve 752
 Tracheostomy care 755
 Tracheotomy, assisting 760
 Transabdominal tube feeding and care 763
 Transcranial Doppler monitoring 767
 Transcutaneous electrical nerve stimulation 769
 Transcutaneous pacing 771
 Transdermal drug application 773
 Transducer system setup 776
 Transfer within a facility 778
 Transfusion of blood and blood products 780
 Transfusion reaction management 785
 Transvenous pacing 788
 Traumatic wound management 791
 Tub baths and showers 795
 Tube feedings 796

U

Ultraviolet light therapy 800
 Unna boot application 802
 Urinary diversion stoma care 803
 Urine collection, 12- or 24-hour timed 806
 Urine glucose and ketone tests 808
 Urine pH 809
 Urine specimen collection 811
 Urine straining, for calculi 813

V

Vaginal medication administration 814
 Venipuncture 816
 Ventricular assist device care 819
 Ventricular drain insertion, assisting 823
 Volume-control set preparation 826

W

Walkers 828
 Water intoxication assessment 830
 Weaning a patient from a ventilator 832
 Wound dehiscence and evisceration management 834
 Wound irrigation 836

Z

Z-track injection 838

Index 841

LIPPINCOTT®

Nursing Procedures

EIGHTH EDITION

**Expert clinical advice and how-to guidelines on over 400 nursing procedures
...from basic to advanced...essential for today's professional nurse**

Completely updated with current best-practice guidelines and step-by-step details, this new edition of *Lippincott Nursing Procedures* provides everything you need to do your job confidently, efficiently, and well, whether you are beginning your nursing career, learning a new skill, or brushing up on a familiar technique.

Every entry in this procedural guide lists the equipment needed; details the nurse's steps before, during, and after the procedure; explains the rationales for certain techniques used; and lists which precautions to take to promote patient safety and positive outcomes.

KEY FEATURES

- A-Z procedures covering every aspect of nursing—from specimen collection...to flushing and locking an intermittent infusion device...to assisting with chest tube insertion...to weaning a patient from a ventilator
- Step-by-step guidelines outlining independent nursing interventions and collaborative steps
- Hundreds of photos and illustrations demonstrating essential equipment and proven techniques
- Complete equipment lists, setup instructions, troubleshooting tips, and helpful timesavers
- Special preprocedure and postprocedure nursing considerations
- Eye-catching Nursing, Pediatric, Elder, and Hospital-Acquired Condition alerts
- Coverage of patient teaching, complications, and documentation

Your book purchase includes a complimentary download of the enhanced eBook for iOS™, Android™, PC, and Mac. Take advantage of these practical features that will improve your eBook experience:

- The ability to download the eBook on multiple devices at one time—providing a seamless reading experience online or offline
- Powerful search tools and smart navigation cross-links that allow you to search within this book or across your entire library of VitalSource eBooks
- Multiple viewing options that enable you to scale images and text to any size without losing page clarity, as well as responsive design
- The ability to highlight text and add notes with one click



All procedures in this edition can also be found in *Lippincott Procedures*, the online clinically based procedures and competency resource used by hospitals nationwide to standardize care and optimize patient outcomes.

To learn more, please visit:
www.LWWNursingSolutions.com


ID 21 1000 5608
ISBN 9781469815299

shop.lww.com

ISBN-13: 978-1-4698-1529-9
ISBN-10: 1-4698-1529-X


9 781469 815299