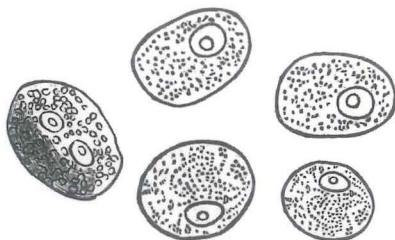


ADULTS PRODUCE  
300 BILLION NEW  
CELLS EVERY DAY.



NERVE IMPULSES TRAVEL TO AND FROM THE  
BRAIN AT MORE THAN 150 MILES PER HOUR.

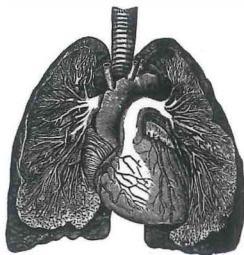


# ANATOMY 101

FROM MUSCLES AND BONES TO  
ORGANS AND SYSTEMS, YOUR GUIDE  
TO HOW THE HUMAN BODY WORKS

A  
CRASH COURSE  
IN  
ANATOMY AND  
PHYSIOLOGY

THE SURFACE AREA OF  
A LUNG IS THE SAME AS  
THAT OF A TENNIS COURT.



YOUR FEET ALONE  
CAN PRODUCE A  
PINT OF SWEAT IN  
A DAY.

KEVIN LANGFORD, PHD

สำนักหอสมุด มหาวิทยาลัยเชียงใหม่

p65

496.5

61655A188

0122578\*

12250322

# ANATOMY 101

FROM MUSCLES AND BONES TO  
ORGANS AND SYSTEMS, YOUR GUIDE  
TO HOW THE HUMAN BODY WORKS

KEVIN LANGFORD, PHD



Adams Media

New York London Toronto Sydney New Delhi

# CONTENTS

INTRODUCTION: THE BUILDING BLOCKS OF ANATOMY AND PHYSIOLOGY	7
THE CHEMISTRY OF CELLS	9
CHEMICAL BONDS	14
ORGANIC COMPOUNDS: CARBOHYDRATES AND PROTEINS	18
ORGANIC COMPOUNDS: LIPIDS AND NUCLEIC ACIDS	22
IMPORTANT INORGANIC COMPOUNDS	26
COMPONENTS OF A CELL	30
MOLECULAR TRAFFICKING	35
CELL GROWTH AND REPLICATION	38
DNA REPLICATION	42
TRANSCRIPTION AND TRANSLATION	46
ENZYMES AND CATALYSIS	50
TISSUE ORIGINS AND DEVELOPMENT	55
EPITHELIAL TISSUE	58
CONNECTIVE TISSUE AND MUSCLE TISSUE	61
NERVOUS TISSUE	65
SKIN, HAIR, AND NAILS	69
SKIN STRUCTURES AND FUNCTIONS	73
SKIN DISEASES AND DISORDERS	77
THE SKELETAL SYSTEM: BONE FUNCTIONS	81
AXIAL SKELETON	84
APPENDICULAR SKELETON AND JOINTS	88
BONE GROWTH, REPAIR, AND DISEASES	93
MAJOR SKELETAL MUSCLES	98
NEUROMUSCULAR JUNCTION	103
MUSCLE CONTRACTION	106

MUSCLE DISEASES AND DISORDERS. . . . .	111
NERVOUS SYSTEM SIGNAL TRANSDUCTION AND NEUROTRANSMITTERS . . . . .	114
BRAIN AND SPINAL CORD. . . . .	119
PERIPHERAL NERVOUS SYSTEM. . . . .	122
AUTONOMIC NERVOUS SYSTEM . . . . .	123
NERVOUS SYSTEM DISEASES AND DISORDERS. . . . .	127
SENSORY SYSTEM RECEPTION AND PERCEPTION . . . . .	131
VISION . . . . .	134
HEARING, BALANCE, SMELL, AND TASTE . . . . .	137
SENSORY SYSTEM DISEASES AND DISORDERS. . . . .	141
CARDIOVASCULAR SYSTEM AND HEART STRUCTURE. . . . .	143
HEART REGULATION . . . . .	146
BLOOD VESSELS . . . . .	150
CIRCULATION. . . . .	154
RED BLOOD CELLS . . . . .	158
WHITE BLOOD CELLS. . . . .	162
PLASMA AND PLATELETS . . . . .	165
HEMOSTASIS . . . . .	168
BLOOD DISEASES AND DISORDERS . . . . .	170
LYMPH AND LYMPHATIC CIRCULATION . . . . .	173
PRIMARY AND SECONDARY LYMPHOID ORGANS . . . . .	177
INNATE AND NATURAL IMMUNITY. . . . .	182
ADAPTIVE IMMUNITY. . . . .	186
IMMUNE SYSTEM DISEASES AND DISORDERS. . . . .	192
DIGESTIVE SYSTEM . . . . .	195
THE UPPER GASTROINTESTINAL TRACT . . . . .	199
THE LOWER GASTROINTESTINAL TRACT . . . . .	204
NUTRITION. . . . .	210

DIGESTIVE SYSTEM DISEASES AND DISORDERS . . . . .	212
RESPIRATORY SYSTEM . . . . .	215
INHALATION, EXHALATION, AND GAS EXCHANGE . . . . .	221
RESPIRATORY DISEASES AND DISORDERS . . . . .	227
ENDOCRINE SYSTEM . . . . .	230
ENDOCRINE SYSTEM DISEASES AND DISORDERS . . . . .	238
URINARY SYSTEM STRUCTURE . . . . .	241
URINARY SYSTEM FUNCTIONS, DISEASES, AND DISORDERS . . . . .	247
MALE REPRODUCTIVE SYSTEM . . . . .	255
MALE REPRODUCTIVE SYSTEM DISEASES AND DISORDERS . . . . .	265
FEMALE REPRODUCTIVE SYSTEM . . . . .	268
FEMALE REPRODUCTIVE SYSTEM DISEASES AND DISORDERS . . . . .	277

INDEX 279