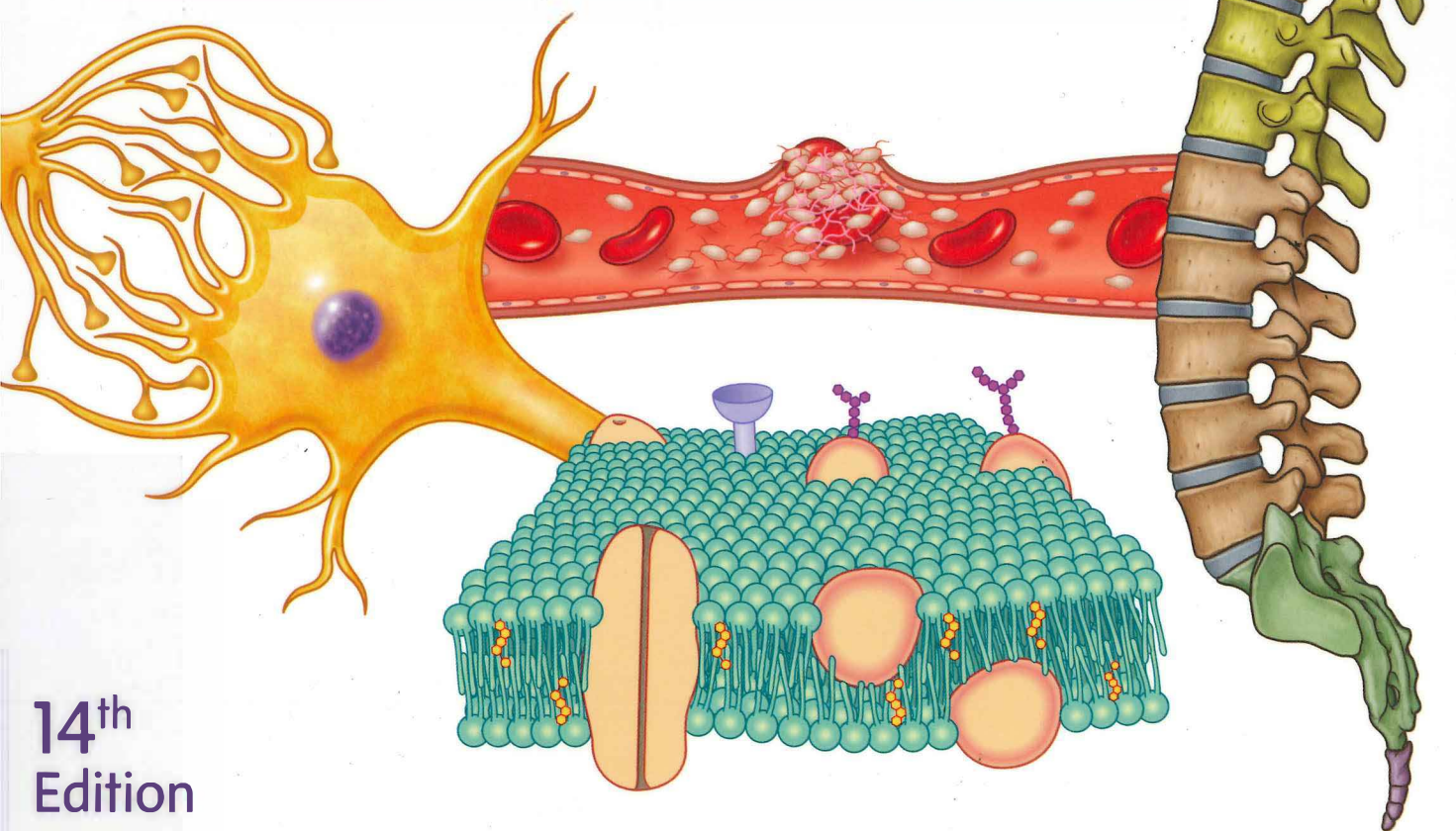


ROSS & WILSON

# Anatomy and Physiology

in Health and Illness

Anne Waugh | Allison Grant



14<sup>th</sup>  
Edition



Evolve<sup>®</sup>

Student Resources on Evolve  
Access Code Inside

สำนักหอสมุด มหาวิทยาลัยเชียงใหม่

ROSS & WILSON

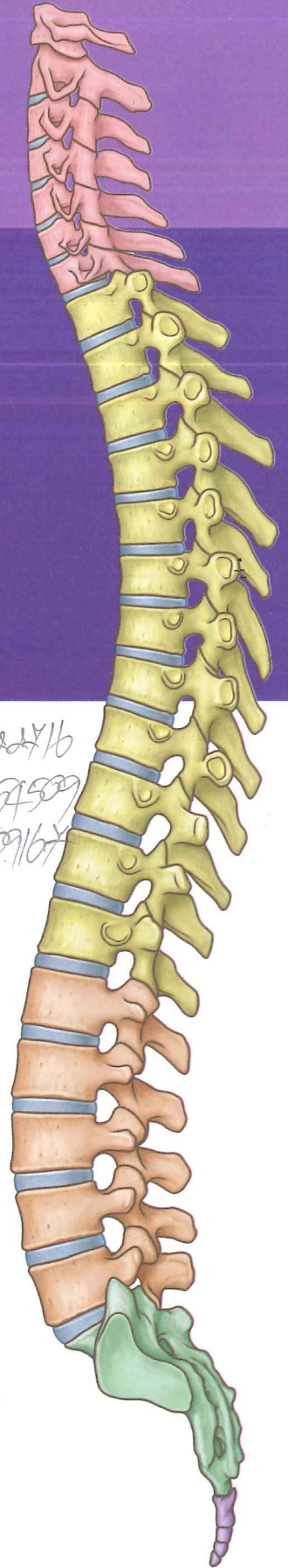
# Anatomy and Physiology in Health and Illness

14<sup>th</sup> Edition

**Anne Waugh** BSc (Hons) MSc CertEd SRN RNT PFHEA  
Former Senior Teaching Fellow and Senior Lecturer,  
School of Health and Social Care,  
Edinburgh Napier University, Edinburgh, UK

**Allison Grant** BSc PhD FHEA  
Lecturer, School of Health and Life Sciences,  
Glasgow Caledonian University, Glasgow, UK

บ 1662416  
12994509  
122609167





# Contents

Preface	vii
Acknowledgements	ix
Anatomical directions and orientation	x
<b>Section 1 The body and its constituents</b>	<b>1</b>
1 Anatomy and organisation of the body	1
2 Physiological chemistry and processes	29
3 Cells and tissues	43
<b>Section 2 Communication</b>	<b>65</b>
4 The blood	65
5 The cardiovascular system	85
6 The lymphatic system	147
7 The nervous system	159
8 The special senses	213
9 The endocrine system	239
<b>Section 3 Intake of raw materials and elimination of waste</b>	<b>267</b>
10 The respiratory system	267
11 Introduction to nutrition	305
12 The digestive system	319
13 The urinary system	377
<b>Section 4 Protection of the body and continuation of the species</b>	<b>401</b>
14 The skin	401
15 Defence and immunity	415
16 The musculoskeletal system	431
17 Genetics and inheritance	487
18 The reproductive systems	501
Answers to self-assessment and case study questions	527
Glossary	541
Normal values	547
Common prefixes, suffixes and roots	549
Bibliography	553
Index	555