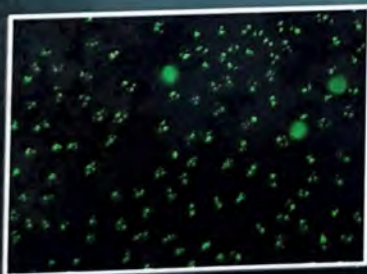
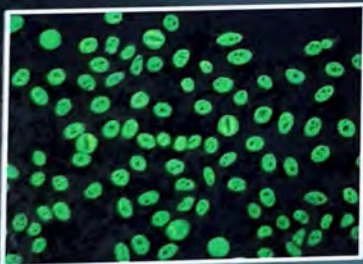
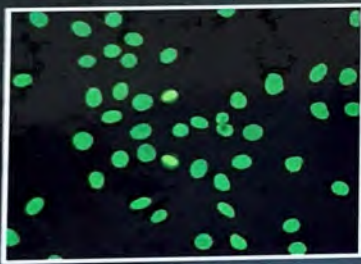


Clinical Immunology & Serology FIFTH EDITION


A Laboratory Perspective

Linda E. Miller

Christine Dorresteyn Stevens



ONLINE RESOURCES
Access code inside

 **F.A. DAVIS**

Contents



SECTION I

Nature of the Immune System 1

1 Introduction to Immunity and the Immune System 2

Christine Dorresteyn Stevens, EdD, MT(ASCP)

Immunity and Immunization	3
Innate Versus Adaptive Immunity	3
Cells of the Innate Immune System	4
Leukocytes in Peripheral Blood	4
Tissue Cells	6
Cells of the Adaptive Immune System	7
B Cells and Plasma Cells	7
T Cells	8
Innate Lymphoid Cells and Natural Killer Cells	8
Organs of the Immune System	9
Primary Lymphoid Organs	9
Secondary Lymphoid Organs	10

2 Innate Immunity 17

*Christine Dorresteyn Stevens, EdD, MT(ASCP)
and Nadine Lerret, PhD, MLS^{CM}(ASCP)*

External Defense System	18
Internal Defense System	19
Pattern Recognition Receptors	19
Pattern Recognition Receptors and Disease	21
Acute-Phase Reactants	21
Inflammation	24
Phagocytosis	25
Action of Natural Killer Cells	27
Innate Lymphoid Cells	28

3 Nature of Antigens and the Major Histocompatibility Complex 31

Aaron Glass, PhD, MB^{CM}(ASCP)

Factors Influencing the Immune Response	32
Traits of Antigens and Immunogens	33
Epitopes	34
Haptens	34
Adjuvants	35
Relationship of Antigens to the Host	37
Major Histocompatibility Complex	37

Genes Coding for MHC Molecules (HLA Antigens)	38
Expression of Class I and II MHC Molecules	39
Structure of Class I MHC Molecules	39
Structure of Class II MHC Molecules	40
Role of Class I and II Molecules in the Immune Response	40
The Class I MHC–Peptide Presentation Pathway	41
The Class II MHC–Peptide Presentation Pathway	42
Clinical Significance of MHC	44

4 Adaptive Immunity 49

Aaron Glass, PhD, MB^{CM}(ASCP)

T-Cell Differentiation	51
Double-Negative Stage	51
Double-Positive Stage	54
Single-Positive Stage	55
Mature T Cells	55
Stages in B-Cell Differentiation	56
Pro-B Cells	56
Pre-B Cells	58
Immature B Cells	58
Mature B Cells	58
Plasma Cells	59
The Role of T Cells in the Adaptive Immune Response	59
Antigen Presentation	60
Actions of T Helper and T Regulatory Cells	60
Action of Cytotoxic T Cells	61
The Role of B Cells in the Adaptive Immune Response	62
Immune Response to T-Dependent Antigens	62
Immune Response to T-Independent Antigens	65

5 Antibody Structure and Function 68

Linda E. Miller, PhD, MB^{CM}(ASCP)SI

General Structure of Immunoglobulins	70
Two-Dimensional Structure	70
Treatment With Proteolytic Enzymes	70
Hinge Region	71
Isotypes, Allotypes, and Idiotypes	72
Three-Dimensional Structure of Antibodies	72
Antibody Classes	72
Immunoglobulin G (IgG)	73

Immunoglobulin M (IgM)	75	System Controls	112
Immunoglobulin A (IgA)	75	Regulation of the Classical and Lectin Pathways	112
Immunoglobulin D (IgD)	76	Regulation of the Alternative Pathway	115
Immunoglobulin E (IgE)	76	Regulation of Terminal Components	115
Immunologic Memory: Primary and Secondary Antibody Responses	77	Complement Receptors and Their Biological Roles	116
Antibody Specificity and Diversity	78	Biological Manifestations of Complement Activation	117
Clonal Selection	78	Complement and Disease States	118
Immunoglobulin Genes	78	Abnormalities of Major Pathway Complement Components	118
Rearrangement of Heavy-Chain Genes	79	Abnormalities of Regulatory Complement Components	118
Light-Chain Rearrangement	79	Laboratory Detection of Complement Abnormalities	119
Additional Sources of Diversity	80	Immunologic Assays of Individual Components	119
Immunoglobulin Class Switching	81	Assays for the Classical Pathway	120
Monoclonal Antibodies	81	Alternative and Lectin Pathway Assays	120
Hybridomas	81	Testing Levels of Complement Activation	121
Clinical and Research Applications	82	Interpretation of Laboratory Findings	121
6 Cytokines	87	Complement Therapeutics	122
<i>Aaron Glass, PhD, MB(ASCP)^{CM}</i>			
Introduction to Cytokines	88		
Cytokines in the Innate Immune Response	91	SECTION II	
Cytokines and the Innate Response to Extracellular Microbes	91	Basic Immunologic Procedures	127
The Interleukin-1 (IL-1) Cytokine Family	91	8 Safety and Quality Management	128
Tumor Necrosis Factors	92	<i>Marjorie Schaub Di Lorenzo, MT(ASCP)SH</i>	
Interleukin-6	92	Laboratory Hazards	129
Chemokines	93	Biological Hazards	129
Transforming Growth Factor- β	94	Sharps Hazards	135
Interferon- α and Interferon- β (Type I Interferons)	95	Chemical Hazards	136
Cytokines in the Adaptive Immune Response	95	Safety Data Sheets (SDS)	136
Cytokines Produced by Th1 Cells	95	Chemical Hygiene Plan	137
Cytokines Produced by Th2 Cells	96	Radioactive Hazards	138
Cytokines Associated With T-Regulatory Cells	97	Electrical Hazards	138
Th17 Cytokines in Innate and Adaptive Immune Responses	97	Fire and Explosive Hazards	139
Hematopoietic Growth Factors	98	Physical Hazards	139
Cytokine and Anti-Cytokine Therapies	99	Quality Management	139
Clinical Assays for Cytokines	99	Procedure Manual	140
7 The Complement System	105	Preexamination Variables	140
<i>Bradley Dixon, MD</i>		Examination Variables	141
<i>and Ashley Frazer-Abel, PhD, D(ABMLI)</i>		Postexamination Variables	143
Pathways of the Complement System	106	Regulatory Issues	144
The Classical Pathway	106	Clinical Laboratory Improvement Amendments (CLIA)	144
The Lectin Pathway	110	Clinical and Laboratory Standards Institute (CLSI)	145
The Alternative Pathway	111	The Joint Commission (TJC)	145
		College of American Pathologists (CAP)	145

Quality Management Systems	145	Competitive Versus Noncompetitive Immunoassays	180
Quality System Essentials	146	Radioimmunoassay (RIA)	182
The Lean System	146	Enzyme Immunoassays (EIAs)	182
Six Sigma	146	Heterogeneous Enzyme Immunoassays	183
Root Cause Analysis	147	Competitive Enzyme Immunoassays	183
9 Principles of Serological Testing	151	Noncompetitive Enzyme Immunoassays	184
<i>Linda E. Miller, PhD, MB^{CM} (ASCP) SI</i>		Capture (Sandwich) Immunoassays	184
and <i>Christine Dorresteyn Stevens, EdD, MT (ASCP)</i>		Biotin-Avidin Labeling	184
Blood Specimen Preparation and Measuring Dilutions	152	Interferences in Immunoassays	184
Simple Dilutions	153	Antigen Interference	185
Compound Dilutions	156	Antibody Interference	186
Serial Dilutions	156	Biotin Interference	187
Test Parameters	158	Other Technical Concerns	187
10 Precipitation and Agglutination Reactions	162	Homogeneous Enzyme Immunoassays	187
<i>Christine Dorresteyn Stevens, EdD, MT(ASCP)</i>		Chemiluminescent Immunoassays	188
and <i>Linda E. Miller, PhD, MB^{CM}(ASCP)SI</i>		Chemiluminescent Microparticle Immunoassay	189
Antigen–Antibody Binding	163	Electrochemiluminescence Immunoassay	189
Affinity	163	Fluorescent Immunoassays	189
Avidity	164	Direct Immunofluorescence Assays	189
Law of Mass Action	164	Indirect Immunofluorescence Assays	190
Precipitation Curve	164	Multiplex Immunoassay (MIA)	190
Three Zones of the Precipitation Reaction	164	Fluorescence Polarization Immunoassays	190
Prozone and Postzone	165	Rapid Immunoassays	191
Immunoturbidimetry and Nephelometry	165	12 Molecular Diagnostic Techniques	197
Passive Immunodiffusion Techniques	166	<i>Lela Buckingham, PhD, MB(ASCP), DLM(ASCP)</i>	
Radial Immunodiffusion	166	DNA and RNA	198
Ouchterlony Double Diffusion	167	Substituted Nucleotides	199
Electrophoretic Techniques	167	The Nucleic Acid Polymer	199
Comparison of Precipitation Techniques	168	DNA Replication	201
Principles of Agglutination Reactions	169	RNA Synthesis	202
Types of Agglutination Reactions	170	Protein Synthesis	202
Direct Agglutination	170	DNA Sequence Changes	203
Passive Agglutination	171	Polymorphisms	204
Reverse Passive Agglutination	171	Electrophoresis	205
Agglutination Inhibition	172	Gel Electrophoresis	205
Instrumentation	172	Capillary Electrophoresis	205
Quality Control and Result Interpretation	173	Molecular Analysis	206
11 Labeled Immunoassays	178	Strand Cleavage Methods	206
<i>Paul R. Johnson, PhD, MBA, MT(ASCP), DABCC</i>		Specific Procedures	206
Immunoassay Labels	180	Hybridization Methods	207
General Immunoassay Formats	180	Specific Procedures	207
Heterogeneous Versus Homogeneous Immunoassays	180	Amplification Methods	209
		Specific Procedures	209

DNA Sequencing	215	15 Autoimmunity	266
Specific Procedures	215	<i>Linda E. Miller, PhD, MB^{CM}(ASCP)SI</i>	
Chain Termination (Sanger) Sequencing	215	Etiology of Autoimmune Disease	267
Pyrosequencing	217	Self-Tolerance	267
Next-Generation Sequencing	218	Genetics	268
Bioinformatics	221	Other Endogenous and Environmental Factors	269
13 Flow Cytometry and Laboratory Automation	225	Systemic Autoimmune Diseases	271
<i>Jeannie Guglielmo, MS, MAT, MLS^{CM}(ASCP)</i>		Systemic Lupus Erythematosus (SLE)	271
<i>and Songkai Hu, MA, MLS^{CM}(ASCP)</i>		Anti-Nuclear Antibodies (ANAs)	274
Flow Cytometry	226	Anti-Phospholipid Antibodies	278
Instrumentation	226	Rheumatoid Arthritis (RA)	279
Sample Preparation	228	Other Systemic Autoimmune	
Data Acquisition and Analysis	228	Rheumatic Diseases (SARDs)	281
Clinical Applications	229	Granulomatosis With Polyangiitis	
Immunoassay Automation	235	(Wegener's Granulomatosis)	281
Validation	238	Anti-Neutrophil Cytoplasmic	
		Antibodies (ANCA)	282
		Organ-Specific Autoimmune Diseases	284
		Autoimmune Thyroid Diseases (AITDs)	284
		Type 1 Diabetes Mellitus (T1D)	287
		Celiac Disease	288
		Autoimmune Liver Diseases	290
		Multiple Sclerosis (MS)	291
		Myasthenia Gravis (MG)	292
		Anti-Glomerular Basement Membrane	
		Disease (Goodpasture's Syndrome)	294
SECTION III		16 Transplantation Immunology	298
Immune Disorders	243	<i>John L. Schmitz, PhD, D(ABMLI, ABHI)</i>	
14 Hypersensitivity	244	Histocompatibility Systems	299
<i>Linda E. Miller, PhD, MB^{CM}(ASCP)SI</i>		Major Histocompatibility Complex (MHC)	
Type I Hypersensitivity	245	Antigens	299
Immunologic Mechanism	246	Minor Histocompatibility Antigens (mHAs)	300
Genetic and Environmental Influences		MHC Class I-Related Chain A (MICA) Antigens	300
on Type I Hypersensitivity	247	ABO Blood Group Antigens	300
Clinical Manifestations of Type I		Killer Immunoglobulin-Like Receptors (KIRs)	301
Hypersensitivity	248	Self-Antigens	302
Treatment of Type I Hypersensitivity	249	Allorecognition	302
Testing for Type I Hypersensitivity	250	Transplant Rejection	303
Type II Hypersensitivity	253	Hyperacute Rejection	303
Immunologic Mechanism	253	Acute Rejection	303
Clinical Examples of Type II Hypersensitivity	254	Chronic Rejection	303
Testing for Type II Hypersensitivity	257	Graft-Versus-Host Disease (GVHD)	303
Type III Hypersensitivity	257	Immunosuppressive Agents	304
Immunologic Mechanism	257	Clinical Histocompatibility Testing	305
Clinical Examples of Type III Hypersensitivity	258	HLA Typing	305
Testing for Type III Hypersensitivity	258		
Type IV Hypersensitivity	259		
Immunologic Mechanism	259		
Clinical Manifestations of Type IV			
Hypersensitivity	259		
Skin Testing for Delayed Hypersensitivity	260		
Interferon Gamma Release Assays (IGRAs)	261		

HLA Phenotyping	305	Lymphomas	349
HLA Genotyping	306	Hodgkin Lymphomas (HLs)	350
HLA Antibody Screening, Identification, and Crossmatching	308	Non-Hodgkin Lymphomas (NHLs)	350
Post-Transplant Testing	308	Plasma-Cell Dyscrasias	351
17 Tumor Immunology	314	Monoclonal Gammopathy of Undetermined Significance (MGUS) and Smoldering Multiple Myeloma (SMM)	352
<i>Linda E. Miller, PhD, MB^{CM}(ASCP) SI</i>		Multiple Myeloma	352
Introduction to Tumor Biology	315	Waldenström Macroglobulinemia	354
Tumor Antigens	317	Heavy-Chain Diseases	355
Clinically Relevant Tumor Markers	320	Role of the Laboratory in Evaluating Immunoproliferative Diseases	356
Clinical Uses of Tumor Markers: Benefits and Limitations	320	Immunophenotyping by Flow Cytometry	356
Serum Tumor Markers	322	Evaluation of Immunoglobulins	357
Laboratory Detection of Tumors	327	Serum Protein Electrophoresis (SPE)	358
Tumor Morphology	327	Immunofixation Electrophoresis (IFE)	358
Immunohistochemistry	327	Serum Free Light-Chain (sFLC) Analysis	360
Immunoassays for Circulating Tumor Markers	328	Evaluation of Genetic and Chromosomal Abnormalities	361
Molecular Methods in Cancer Diagnosis	329	19 Immunodeficiency Diseases	367
Interactions Between the Immune System and Tumors	331	<i>Thomas S. Alexander, PhD, D(ABMLI)</i>	
Immune Defenses Against Tumor Cells	331	Clinical Effects of Primary Immunodeficiency Diseases	368
Innate Immune Responses	331	The Nine Categories of Primary Immunodeficiency Diseases	370
Adaptive Immune Responses	332	Category 3: Predominantly Antibody Deficiencies	370
Immunoediting and Tumor Escape	333	Category 1: Immunodeficiencies Affecting Cellular and Humoral Immunity	372
Elimination	333	Category 2: Combined Immunodeficiencies With Associated or Syndromic Features	373
Equilibrium	333	Category 4: Diseases of Immune Dysregulation	376
Escape	333	Category 5: Congenital Defects of Phagocyte Number, Function, or Both	376
Immunotherapy	334	Category 6: Defects in Intrinsic and Innate Immunity	377
Active Immunotherapy and Cancer Vaccines	335	Category 7: Autoinflammatory Disorders	377
Passive Immunotherapy	336	Category 8: Complement Deficiencies	377
Adoptive Immunotherapy	339	Category 9: Phenocopies of Primary Immunodeficiencies	378
18 Immunoproliferative Diseases	345	Laboratory Evaluation of Immune Dysfunction	378
<i>Linda E. Miller, PhD, MB^{CM}(ASCP) SI</i>		Screening Tests	378
Malignant Transformation of Hematologic Cells	346	Confirmatory Tests	378
Cell Properties	346	Newborn Screening for Immunodeficiencies	379
Genetic Changes	347	Evaluation of Immunoglobulins	380
Classification of Hematologic Malignancies	347	Bone Marrow Biopsy	381
Leukemias	348	Family History	381
Acute Lymphoblastic Leukemias (ALLs)	348	Primary Immune Deficiencies in a Computer App	382
Chronic Lymphocytic Leukemia (CLL)/ Small Lymphocytic Lymphoma (SLL)	349		
Hairy-Cell Leukemia	349		

SECTION IV

Serological and Molecular
Diagnosis of Infectious Disease 38520 Serological and Molecular
Detection of Bacterial Infections 386James L. Vossler, MS, MLS^{CM}(ASCP) SM^{CM}

Human–Microbe Relationships	387
Bacterial Virulence Factors	388
Structural Virulence Features	388
Extracellular Virulence Factors	390
Endotoxin and Exotoxins	390
Immune Defenses Against Bacterial Infections and Mechanisms of Evasion	391
Immune Defense Mechanisms	391
Bacterial Evasion Mechanisms	391
Laboratory Detection and Diagnosis of Bacterial Infections	393
Bacterial Culture	393
Microscopic Visualization	393
Antigen Detection	394
Molecular Detection	394
Serological Diagnosis	394
Proteomics	395
Group A Streptococci (<i>Streptococcus pyogenes</i>)	396
Classification and Structure	396
Virulence Factors	396
Clinical Manifestations of Group A Streptococcal Infection	397
Group A Streptococcal Sequelae	398
Laboratory Diagnosis	398
<i>Helicobacter pylori</i>	400
<i>Helicobacter pylori</i> Virulence Factors	401
Pathology and Pathogenesis	401
Diagnosis of <i>H. pylori</i> Infection	401
<i>Mycoplasma pneumoniae</i>	402
<i>Mycoplasma pneumoniae</i> Pathogenesis	402
Dermatological Manifestations	403
Immunology of <i>Mycoplasma pneumoniae</i> Infection	403
Laboratory Diagnosis of <i>Mycoplasma</i> <i>pneumoniae</i> Infection	403
Rickettsial Infections	404
Agents of Rickettsia-Related Disease	404
Rocky Mountain Spotted Fever	406

21 Spirochete Diseases 412

Hamida Nusrat, PhD, PHM

Syphilis	413
Characteristics of <i>Treponema pallidum</i>	413
Mode of Transmission	413
Stages of the Disease	414
Congenital Syphilis	415
Nature of the Immune Response	415
Laboratory Diagnosis	415
Direct Detection	415
Treatment	421
Lyme Disease	421
Characteristics of <i>Borrelia</i> Species	421
Mode of Transmission	422
Stages of the Disease	422
Nature of the Immune Response	423
Laboratory Diagnosis	423
Treatment	425
Leptospirosis	426
Characteristics of <i>Leptospira</i> Species	426
Mode of Transmission	426
Stages of the Disease	426
Laboratory Diagnosis	426
Treatment	426

22 Serological and Molecular Diagnosis
of Parasitic and Fungal Infections 431James L. Vossler, MS, MLS^{CM}(ASCP)SM^{CM}

Parasitic Immunology	432
Immune Responses to Parasites	433
Parasite Survival Strategies	434
Serodiagnosis of Parasitic Diseases	435
Molecular-Based Diagnosis of Parasitic Disease	440
Fungal Immunology	440
Characteristics of Fungi	441
Classification of Mycotic Infections (Mycoses)	441
Immune Responses to Fungi	441
Laboratory Diagnosis of Fungal Infections	443
Fungal Pathogens	443

23 Serological and Molecular
Detection of Viral Infections 451Linda E. Miller, PhD, MB^{CM}(ASCP)SI
and Deborah Josko, PhD, MLT(ASCP)M, SM

Immune Defenses Against Viral Infections	453
--	-----

Viral Escape Mechanisms	454	Disease Monitoring	489
Laboratory Testing for Viral Infections	454	CD4 T-Cell Enumeration	489
Hepatitis Viruses	455	Quantitative Viral Load Assays	491
Hepatitis A	455	Drug-Resistance and Tropism Testing	492
Hepatitis E	457	Testing of Infants Younger Than 18 Months	493
Hepatitis B	457	25 Immunization and Vaccines	497
Hepatitis D	460	<i>Linda E. Miller, PhD, MB^{CM}(ASCP)SI</i>	
Hepatitis C	461	Vaccines	498
Herpes Virus Infections	462	Historical Evolution of Vaccines	498
Epstein-Barr Virus (EBV)	462	Types of Vaccines	501
Cytomegalovirus (CMV)	464	Factors Influencing Immunogenicity	504
Varicella-Zoster Virus (VZV)	466	Challenges and Future Directions in Vaccine Development	507
Other Viral Infections	467	Benefits and Adverse Effects of Vaccines	508
Rubella	467	Passive Immunization	510
Rubeola	468	Passive Immunization as Therapy for Infectious Diseases	511
Mumps	470	Advantages and Limitations of Passive Immunization	511
Human T-Cell Lymphotropic Viruses	471	Immunosuppressive Effects of Passive Immunization	512
24 Laboratory Diagnosis of HIV Infection	476	Monoclonal Antibodies	512
<i>Linda E. Miller, PhD, I, MB^{CM}(ASCP)SI</i>		Adoptive Immunotherapy	514
HIV Transmission	477	Adoptive Immunotherapy for Cancer	514
Characteristics of HIV	478	CAR-T-Cell Therapy	515
Composition of the Virus	478	Other Applications of Adoptive Immunotherapy	515
Structural Genes	478	Glossary	521
Viral Replication	479	References	537
Immunologic Manifestations	480	Answer Key	577
Immune Responses to HIV	480	Index	587
Effects of HIV Infection on the Immune System	481		
Clinical Symptoms of HIV Infection	481		
Treatment and Prevention	483		
Laboratory Testing for HIV Infection	484		
Screening and Diagnosis	484		
Testing Algorithms	484		
Serological Test Principles	486		
Qualitative Nucleic Acid Tests (NATs)	489		

Clinical Immunology and Serology

A Laboratory Perspective, 5th Edition

Linda E. Miller | Christine Dorresteyn Stevens

Practical. Easy to read. Student friendly.

Here's the practical introduction you need to understand the essential theoretical principles of clinical immunology and their direct application to clinical laboratory practice.

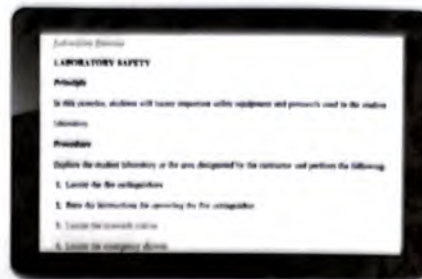
Get more of what you need online!

Unlock access to the resources for course success.

- Lab Exercises
- Branching Case Studies
- COVID-19 Updates

Redeem your FREE access code!

See inside front cover for details.



★★★★★

This book is key in your study for the ASCP certification.

—Jay D., Online Reviewer



Study smarter, not harder!

Here's the combination you need to pass the exam...guaranteed*! *Medical Laboratory Science Review*, a trusted text, and Davis Edge, an online Q&A program, work together to provide intensive practice with certification-style questions.

Lower the cost of your textbooks with 1-year access to 11 eBooks—a cost-saving option that ensures you have the content you need to be successful in class, clinical, and practice.

Med Lab Science LIBRARY

powered by  VitalSource

SAVE 20% + FREE SHIPPING

Use Promo Code: **DAVIS20**

ORDER TODAY!

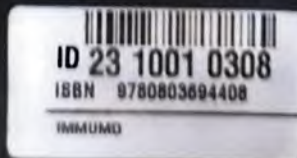
FADavis.com

*Money-back guarantee. See FADavis.com for details.
©F.A. Davis. Promotion subject to change without notice.
Offer valid for individual purchases from FADavis.com in the U.S. only.



F.A. DAVIS

Independent Publishers Since 1879
FADavis.com



ISSN 978-0-8036-9440-3

